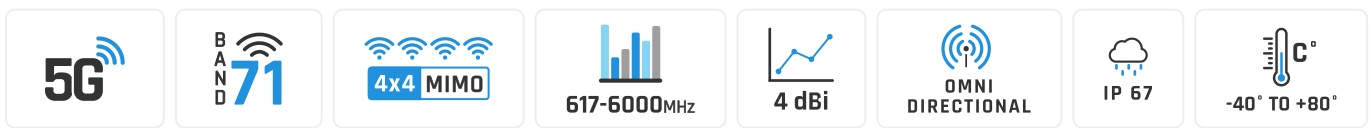


Qu0mni 5G/LTE Global MIMO 4x4

Omnidirectional ultra wideband 5G/LTE MIMO 4x4 antenna

Qu0mni 5G/LTE omnidirectional MIMO 4x4 is ultra wideband LTE Outdoor antenna. It's primary designed for LTE/5G/3G/2G devices which require high efficiency connections. The antenna covers many LTE bands including the new Extended LTE Band 71, frequencies: **617 - 6000MHz**. The mounting bracket allows the antenna to be installed on the buildings (on the pole or on the wall) as the client antenna or on the moving points like trains, buses, lorries, yachts, boats to receive Internet by LTE/5G/3G/2G. It's ideal solution to use with all industrial and domestic 4x4 LTE modems and routers like: Teltonika, DIGI, Mikrotik, Robustel, Cisco, etc.



WIDE BAND 600-6000MHZ, 5G TECHNOLOGY



GALVANIZED STEEL, WALL OR POLE MOUNTING BRACKET



FOUR SMA CONNECTORS



360° BEAMWIDTH



POE 4.5DBI GAIN



MADE IN EUROPE



5G AND LTE ANTENNA SPECIFICATION

FREQUENCY	617 - 960 MHz 1.7 - 2.7 GHz 3.3 - 4.7 GHz 5.2 - 6.0 GHz
GAIN	617 - 960 MHz : 3 dBi 1.7 - 2.2 GHz : 4 dBi 3.3 - 4.7 GHz : 4.5 dBi 5.2 - 6.0 GHz : 2.5dBi
SUPPORTED LTE/5G BANDS	1, 2, 3, 4, 5, 7, 8, 9, 10, 12, 13, 14, 17, 18, 19, 20, 22, 25, 26, 27, 28, 29, 30, 33, 34, 35, 36, 37, 38, 39, 40, 41, 42, 43, 44, 48, 49, 52, 53, 65, 66, 67, 68, 69, 71, 85, 103, n77, n78, n79, n80, n81, n82, n83, n84, n85, n89, n90, n95, n97, n98, n100, n101
VSWR	<1.80, max <2.00
BEAMWIDTH	360°/35° ±5°
POLARIZATION	Vertical
IMPEDANCE	50 Ω

MECHANICAL SPECIFICATION

MATERIALS	ABS, aluminum, PTFE
CONNECTOR TYPE	SMA
INGRESS PROTECTION	IP67
DIMENSIONS	160 x 160 x 240 mm 6.3 x 6.3 x 9.45 inch
WEIGHT	1.5 kg 3.31 lbs
OPERATING TEMPERATURE	From -40°C to 80°C From -40°F to 176°F

FREQUENCY BANDS

LTE / 4G GSM	<table border="1"> <tr> <td>5</td><td>6</td><td>8</td><td>12</td><td>13</td><td>14</td><td>17</td> </tr> <tr> <td>18</td><td>19</td><td>20</td><td>26</td><td>27</td><td>28</td><td>29</td> </tr> <tr> <td>44</td><td>67</td><td>68</td><td>71</td><td>85</td><td>n81</td><td>n82</td> </tr> <tr> <td>n83</td><td>n89</td><td></td><td></td><td></td><td></td><td></td> </tr> </table>	5	6	8	12	13	14	17	18	19	20	26	27	28	29	44	67	68	71	85	n81	n82	n83	n89						617 MHz	960 MHz
5	6	8	12	13	14	17																									
18	19	20	26	27	28	29																									
44	67	68	71	85	n81	n82																									
n83	n89																														
LTE / 4G UMTS	<table border="1"> <tr> <td>1</td><td>2</td><td>3</td><td>4</td><td>9</td><td>10</td><td>25</td> </tr> <tr> <td>33</td><td>34</td><td>35</td><td>36</td><td>37</td><td>39</td><td>59</td> </tr> <tr> <td>62</td><td>n80</td><td>n84</td><td>n86</td><td>n95</td><td></td><td></td> </tr> </table>	1	2	3	4	9	10	25	33	34	35	36	37	39	59	62	n80	n84	n86	n95			1710 MHz	2170 MHz							
1	2	3	4	9	10	25																									
33	34	35	36	37	39	59																									
62	n80	n84	n86	n95																											
LTE / 4G WCS DARS	<table border="1"> <tr> <td>30</td><td>40</td> </tr> </table>	30	40	2300 MHz	2400 MHz																										
30	40																														

LTE / 4G

2400 MHz	7	38	41	53	69	n90	2700 MHz
-------------	---	----	----	----	----	-----	-------------

LTE / 5G

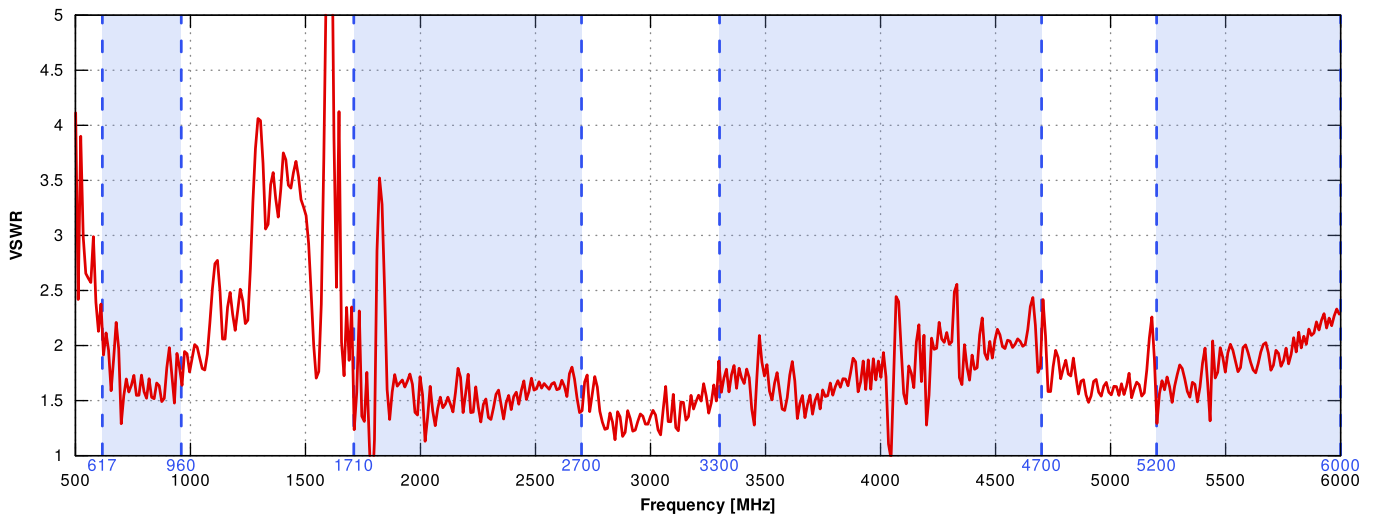
3300 MHz	22	42	43	48	49	52	n78	3800 MHz
-------------	----	----	----	----	----	----	-----	-------------

COMPATIBLE ROUTERS

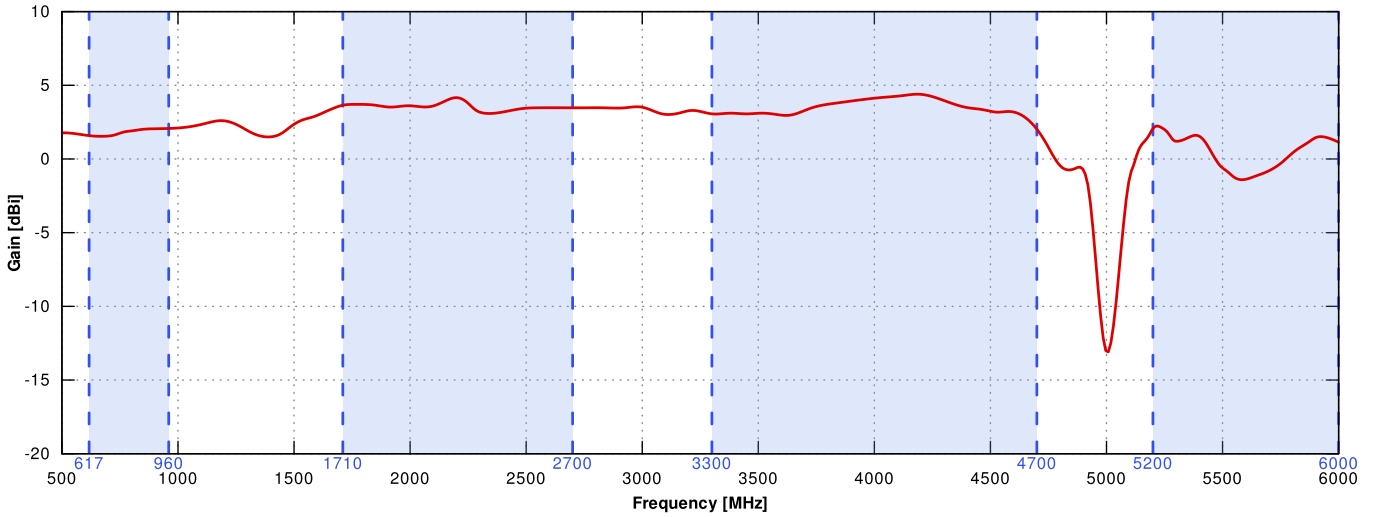
VARIANTS: A05G4-G, A05G4-G1

PLOTS

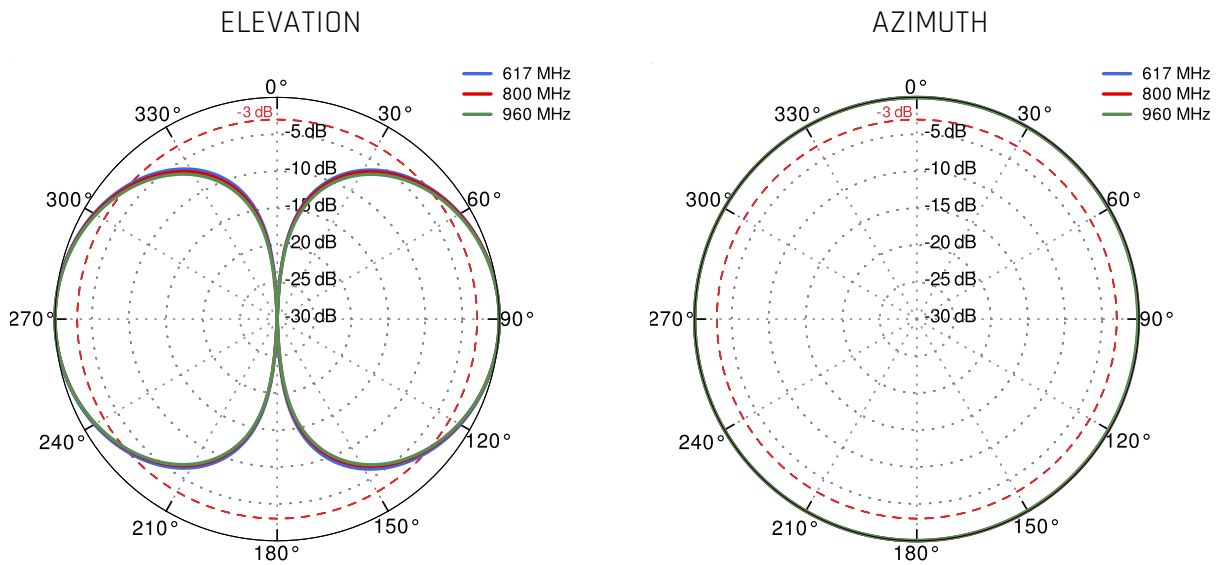
VSWR



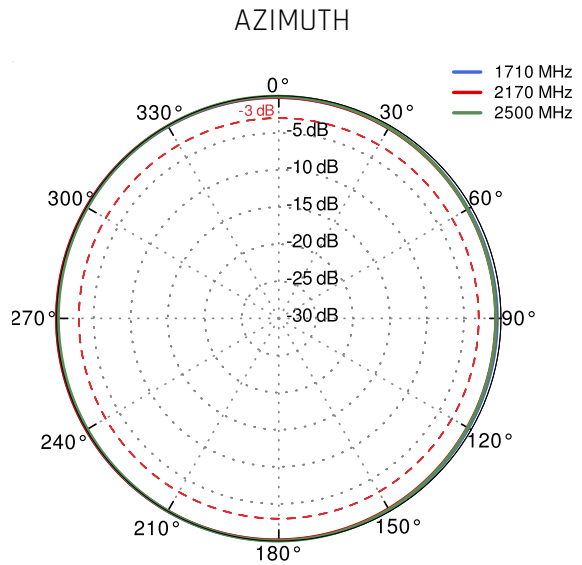
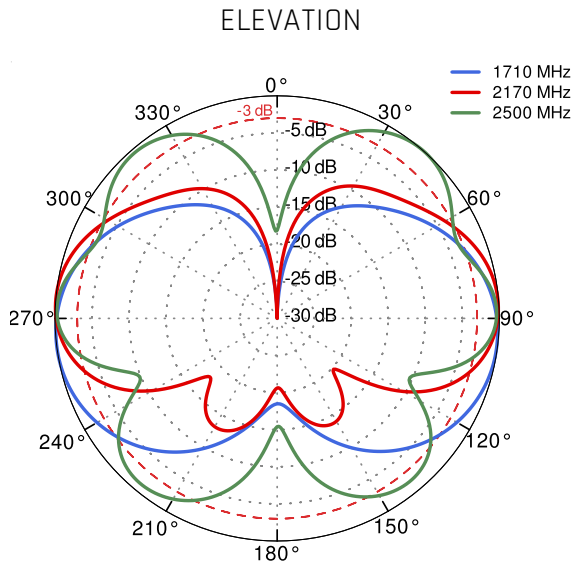
Gain



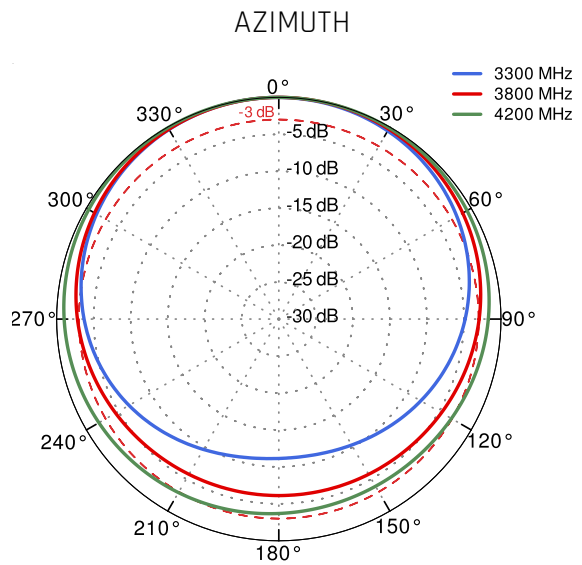
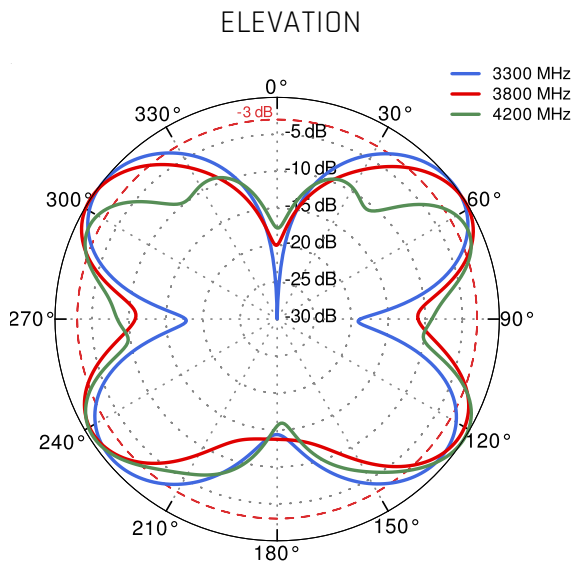
From 617MHz to 950MHz



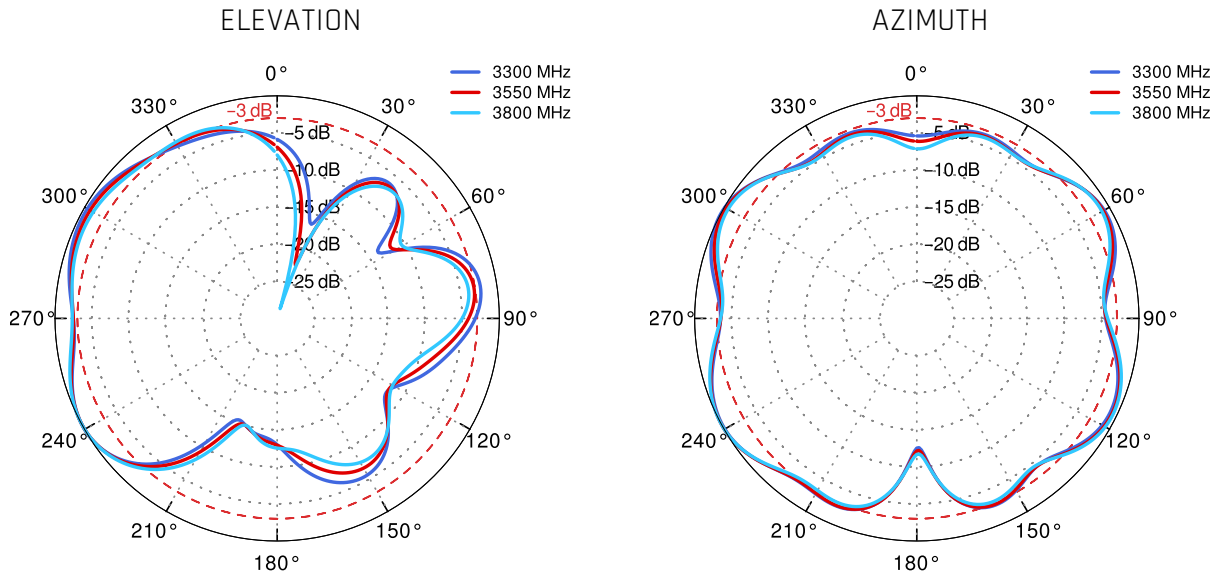
From 1.71GHz to 2.5GHz



From 3.3GHz to 4.2GHz



From 5.2GHz to 6.0GHz



DIMENSIONS

