

Cable ID	Summary	Test Limit	Length	Headroom	Date / Time
CAT8_FLAT_8M_2	PASS	TIA Cat 8 Channel	8.8 m	13.2 dB (NEXT)	02/27/2020 02:29 PM
CAT8_FLAT_8M_1	PASS	TIA Cat 8 Channel	8.8 m	12.5 dB (NEXT)	02/27/2020 02:28 PM
CAT8_FLAT_5M_2	PASS	TIA Cat 8 Channel	5.6 m	11.8 dB (NEXT)	02/27/2020 02:28 PM
CAT8_FLAT_5M_1	PASS	TIA Cat 8 Channel	5.6 m	11.7 dB (NEXT)	02/27/2020 02:27 PM
CAT8_FLAT_3M_2	PASS	TIA Cat 8 Channel	3.5 m	12.8 dB (NEXT)	02/27/2020 02:25 PM
CAT8_FLAT_3M_1	PASS	TIA Cat 8 Channel	3.5 m	12.9 dB (NEXT)	02/27/2020 02:25 PM
CAT8_FLAT_2M_2	PASS	TIA Cat 8 Channel	2.2 m	12.8 dB (NEXT)	02/27/2020 02:24 PM
CAT8_FLAT_2M_1	PASS	TIA Cat 8 Channel	2.2 m	11.8 dB (NEXT)	02/27/2020 02:23 PM
CAT8_FLAT_1.5M_2	PASS	TIA Cat 8 Channel	1.7 m	11.3 dB (NEXT)	02/27/2020 02:22 PM
CAT8_FLAT_1.5M_1	PASS	TIA Cat 8 Channel	1.7 m	11.4 dB (NEXT)	02/27/2020 02:21 PM
CAT8_FLAT_1M_2	PASS	TIA Cat 8 Channel	1.3 m	11.3 dB (NEXT)	02/27/2020 02:20 PM
CAT8_FLAT_1M_1	PASS	TIA Cat 8 Channel	1.3 m	12.6 dB (NEXT)	02/27/2020 02:19 PM
CAT8_FLAT_0.5M_2	PASS	TIA Cat 8 Channel	0.6 m	14.5 dB (NEXT)	02/27/2020 02:18 PM
CAT8_FLAT_0.5M_1	PASS	TIA Cat 8 Channel	0.6 m	14.6 dB (NEXT)	02/27/2020 02:17 PM

Total Length:	47.4 m
Number of Reports:	14
Number of Passing Reports:	14
Number of Failing Reports:	0
Number of Warning Reports:	0
Documentation Only:	0



Cable ID: CAT8_FLAT_8M_2

Date / Time: 02/27/2020 02:29:41 PM

Headroom 13.2 dB (NEXT 36-45)

Test Limit: TIA Cat 8 Channel

Cable Type: Cat 8 S/FTP

NVP: 72.0%

Operator: KINGDATA

Software Version: V6.1 Build 3

Limits Version: V7.1

Calibration Start Date:

Main (Module): 05/11/2018

Remote (Module): 05/11/2018

Test Summary: PASS

Model: DSX-8000

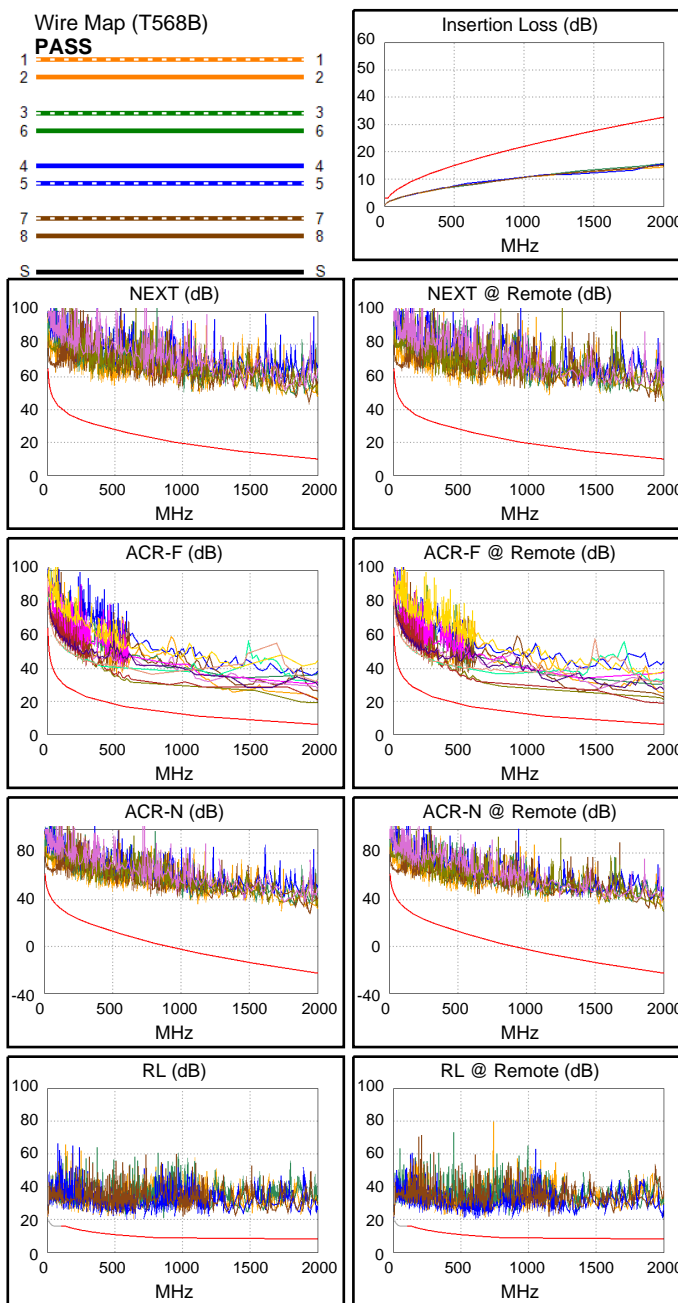
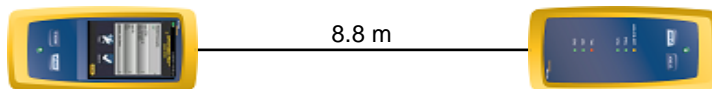
Main S/N: 1747425

Remote S/N: 1747424

Main Adapter: DSX-CHA804

Remote Adapter: DSX-CHA804

Length (m), Limit 30.0	[Pair 12]	8.8
Prop. Delay (ns), Limit 179	[Pair 12]	41
Delay Skew (ns), Limit 17	[Pair 12]	0
Resistance (ohms), Limit 6.40	[Pair 12]	5.39
Insertion Loss Margin (dB)	[Pair 36]	17.0
Frequency (MHz)	[Pair 36]	2000.0
Limit (dB)	[Pair 36]	32.7



Worst Case Margin Worst Case Value

PASS	MAIN	SR	MAIN	SR
Worst Pair	36-45	36-45	36-45	36-78
NEXT (dB)	13.2	13.3	33.3	35.8
Freq. (MHz)	3.5	10.4	1942.	1996.
Limit (dB)	64.7	57.0	10.3	9.9
Worst Pair	36	36	36	36
PS NEXT (dB)	14.7	16.0	35.3	37.7
Freq. (MHz)	3.0	10.8	1942.	1996.
Limit (dB)	62.0	53.5	7.7	7.4

PASS	MAIN	SR	MAIN	SR
Worst Pair	36-45	45-36	36-45	45-36
ACR-F (dB)	12.6	12.3	12.7	12.4
Freq. (MHz)	1952.	1952.	1956.	1956.
Limit (dB)	6.2	6.2	6.1	6.1
Worst Pair	36	36	36	36
PS ACR-F (dB)	15.0	14.2	15.0	14.3
Freq. (MHz)	2000.	1950.	2000.	1956.
Limit (dB)	2.9	3.2	2.9	3.1

N/A	MAIN	SR	MAIN	SR
Worst Pair	36-45	36-45	36-45	36-78
ACR-N (dB)	15.2	15.2	50.3	53.4
Freq. (MHz)	10.6	10.4	1942.	1996.
Limit (dB)	53.9	54.0	-21.9	-22.8
Worst Pair	36	36	36	36
PS ACR-N (dB)	17.1	17.9	51.9	54.7
Freq. (MHz)	3.0	10.8	1942.	1996.
Limit (dB)	59.0	50.5	-24.4	-25.3

PASS	MAIN	SR	MAIN	SR
Worst Pair	12	45	78	45
RL (dB)	11.5	12.2	14.7	13.3
Freq. (MHz)	228.0	523.0	1390.	1990.
Limit (dB)	13.8	10.5	8.0	8.0

Compliant Network Standards:
 10BASE-T 100BASE-TX 100BASE-T4
 1000BASE-T 2.5GBASE-T 5GBASE-T
 10GBASE-T 25GBASE-T 40GBASE-T
 ATM-25 ATM-51 ATM-155
 100VG-AnyLan TR-4 TR-16 Active
 TR-16 Passive



Cable ID: CAT8_FLAT_8M_1

Date / Time: 02/27/2020 02:28:45 PM

Headroom 12.5 dB (NEXT 36-78)

Test Limit: TIA Cat 8 Channel

Cable Type: Cat 8 S/FTP

NVP: 72.0%

Operator: KINGDATA

Software Version: V6.1 Build 3

Limits Version: V7.1

Calibration Start Date:

Main (Module): 05/11/2018

Remote (Module): 05/11/2018

Test Summary: PASS

Model: DSX-8000

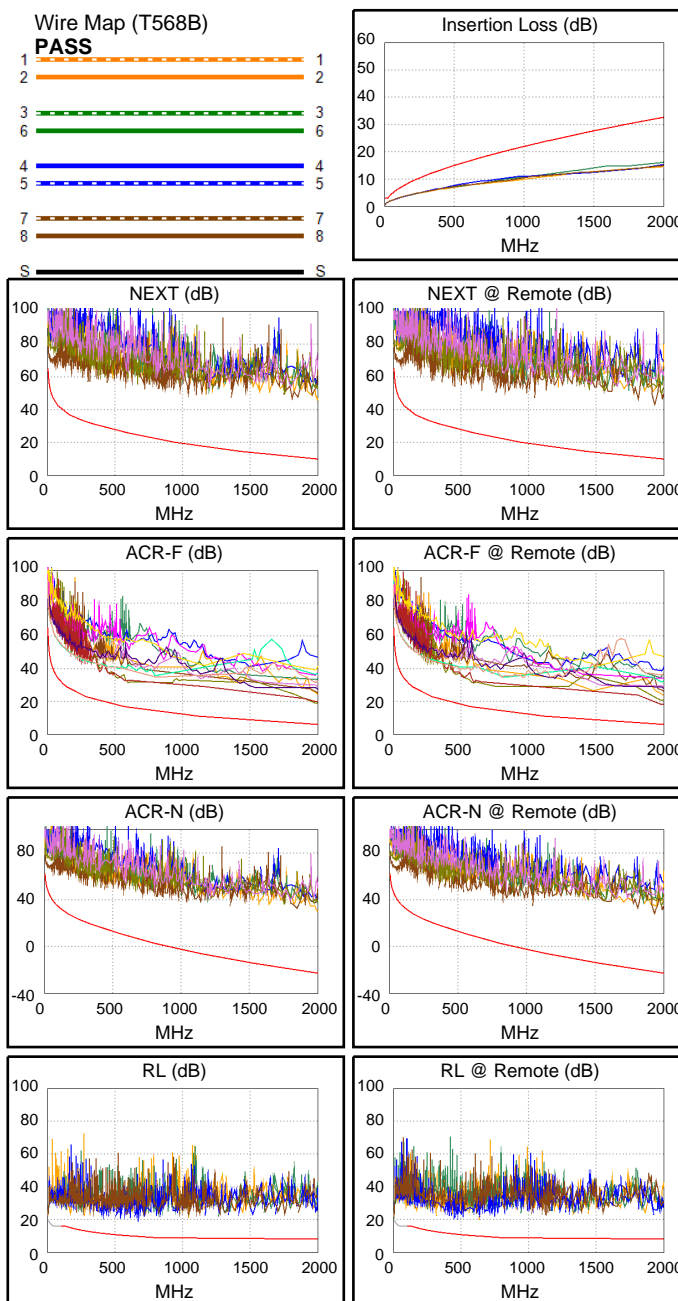
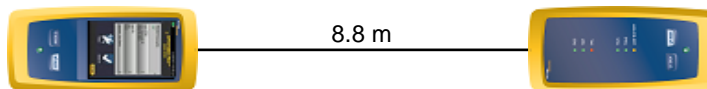
Main S/N: 1747425

Remote S/N: 1747424

Main Adapter: DSX-CHA804

Remote Adapter: DSX-CHA804

Length (m), Limit 30.0	[Pair 12]	8.8
Prop. Delay (ns), Limit 179	[Pair 12]	41
Delay Skew (ns), Limit 17	[Pair 12]	0
Resistance (ohms), Limit 6.40	[Pair 12]	5.42
Insertion Loss Margin (dB)	[Pair 36]	16.5
Frequency (MHz)	[Pair 36]	2000.0
Limit (dB)	[Pair 36]	32.7



Worst Case Margin Worst Case Value

PASS	MAIN	SR	MAIN	SR
Worst Pair	36-78	36-78	12-36	36-45
NEXT (dB)	14.0	12.5	36.1	32.9
Freq. (MHz)	1.0	1.3	1996.	1932.
Limit (dB)	65.0	65.0	9.9	10.3
Worst Pair	36	36	12	36
PS NEXT (dB)	15.3	14.2	37.5	34.5
Freq. (MHz)	3.0	1.3	1996.	1932.
Limit (dB)	62.0	62.0	7.4	7.8

PASS	MAIN	SR	MAIN	SR
Worst Pair	78-36	45-36	36-45	45-36
ACR-F (dB)	12.5	12.1	12.9	12.1
Freq. (MHz)	1.0	1986.	1986.	1986.
Limit (dB)	65.0	6.0	6.0	6.0
Worst Pair	36	36	36	36
PS ACR-F (dB)	15.2	13.9	15.3	13.9
Freq. (MHz)	1998.	2000.	2000.	2000.
Limit (dB)	3.0	2.9	2.9	2.9

N/A	MAIN	SR	MAIN	SR
Worst Pair	36-45	36-78	12-36	36-45
ACR-N (dB)	16.5	15.1	52.7	49.9
Freq. (MHz)	9.1	1.3	1996.	1932.
Limit (dB)	55.0	62.0	-22.8	-21.7
Worst Pair	36	36	36	36
PS ACR-N (dB)	17.7	16.8	54.4	50.6
Freq. (MHz)	3.0	1.3	1996.	1932.
Limit (dB)	59.0	59.0	-25.3	-24.2

PASS	MAIN	SR	MAIN	SR
Worst Pair	12	12	45	45
RL (dB)	8.8	10.5	11.4	14.2
Freq. (MHz)	170.0	172.5	575.0	1936.
Limit (dB)	14.9	14.9	10.2	8.0

Compliant Network Standards:

10BASE-T	100BASE-TX	100BASE-T4
1000BASE-T	2.5GBASE-T	5GBASE-T
10GBASE-T	25GBASE-T	40GBASE-T
ATM-25	ATM-51	ATM-155
100VG-AnyLan	TR-4	TR-16 Active
TR-16 Passive		



Cable ID: CAT8_FLAT_5M_2

Date / Time: 02/27/2020 02:28:12 PM

Headroom 11.8 dB (NEXT 36-45)

Test Limit: TIA Cat 8 Channel

Cable Type: Cat 8 S/FTP

NVP: 72.0%

Operator: KINGDATA

Software Version: V6.1 Build 3

Limits Version: V7.1

Calibration Start Date:

Main (Module): 05/11/2018

Remote (Module): 05/11/2018

Test Summary: PASS

Model: DSX-8000

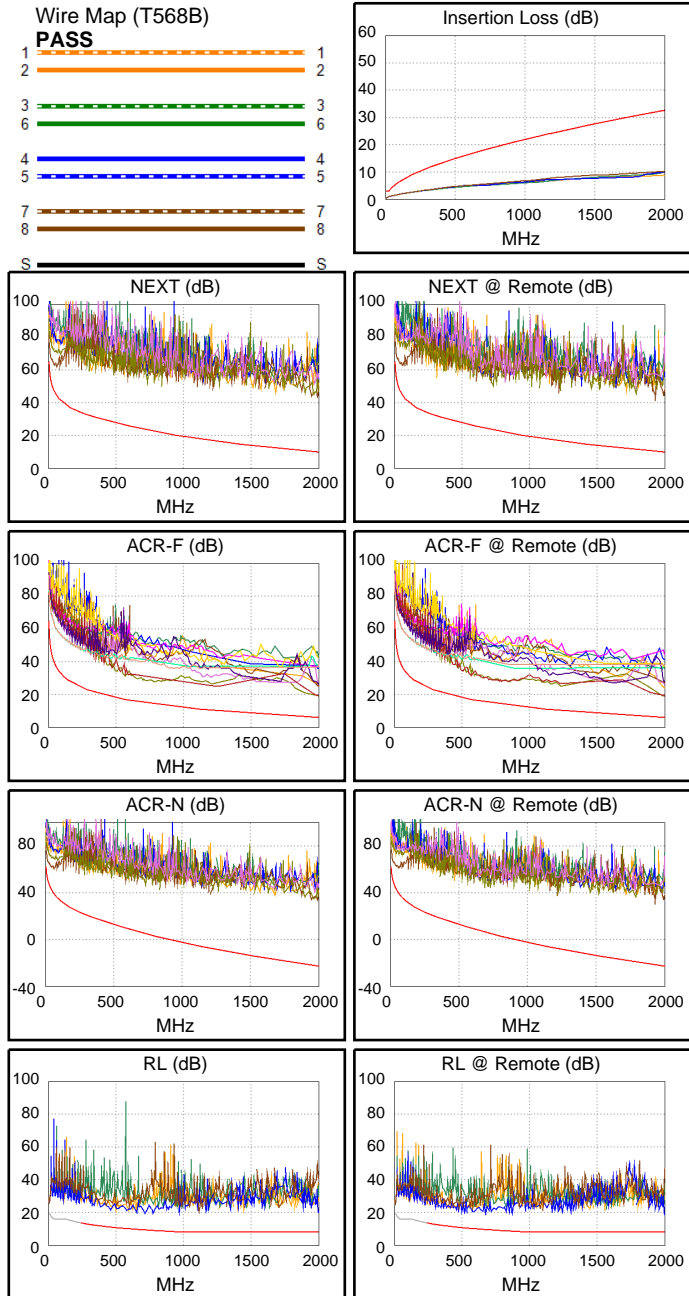
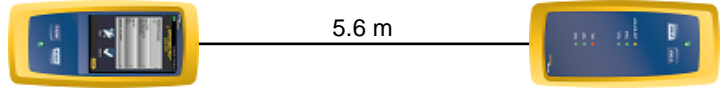
Main S/N: 1747425

Remote S/N: 1747424

Main Adapter: DSX-CHA804

Remote Adapter: DSX-CHA804

Length (m), Limit 30.0	[Pair 12]	5.6
Prop. Delay (ns), Limit 179	[Pair 12]	26
Delay Skew (ns), Limit 17	[Pair 12]	0
Resistance (ohms), Limit 6.40	[Pair 12]	3.39
Insertion Loss Margin (dB)	[Pair 78]	22.3
Frequency (MHz)	[Pair 78]	1978.0
Limit (dB)	[Pair 78]	32.5



Worst Case Margin Worst Case Value

PASS	MAIN	SR	MAIN	SR
Worst Pair	36-45	36-45	36-45	36-45
NEXT (dB)	11.8	12.7	33.7	34.4
Freq. (MHz)	3.4	3.3	1990.	1992.
Limit (dB)	65.0	65.0	9.9	9.9
Worst Pair	36	36	36	36
PS NEXT (dB)	13.8	14.7	34.2	35.6
Freq. (MHz)	3.3	3.3	1946.	1930.
Limit (dB)	62.0	62.0	7.7	7.8

PASS	MAIN	SR	MAIN	SR
Worst Pair	45-36	36-45	36-45	36-45
ACR-F (dB)	12.9	12.8	13.0	12.9
Freq. (MHz)	1998.	1998.	2000.	2000.
Limit (dB)	6.0	6.0	5.9	5.9
Worst Pair	36	36	36	36
PS ACR-F (dB)	14.5	14.5	14.5	14.5
Freq. (MHz)	2000.	2000.	2000.	2000.
Limit (dB)	2.9	2.9	2.9	2.9

N/A	MAIN	SR	MAIN	SR
Worst Pair	36-45	36-45	36-45	36-45
ACR-N (dB)	14.4	15.3	56.3	57.0
Freq. (MHz)	3.4	3.3	1990.	1992.
Limit (dB)	62.0	62.0	-22.7	-22.7
Worst Pair	36	36	36	36
PS ACR-N (dB)	16.4	17.3	57.0	59.2
Freq. (MHz)	3.3	3.3	1946.	1990.
Limit (dB)	59.0	59.0	-24.5	-25.2

PASS	MAIN	SR	MAIN	SR
Worst Pair	45	45	45	45
RL (dB)	10.0	8.9	10.0	10.8
Freq. (MHz)	714.0	518.0	714.0	1998.
Limit (dB)	9.3	10.6	9.3	8.0

Compliant Network Standards:
 10BASE-T 100BASE-TX 100BASE-T4
 1000BASE-T 2.5GBASE-T 5GBASE-T
 10GBASE-T 25GBASE-T 40GBASE-T
 ATM-25 ATM-51 ATM-155
 100VG-AnyLan TR-4 TR-16 Active
 TR-16 Passive



Cable ID: CAT8_FLAT_5M_1

Date / Time: 02/27/2020 02:27:28 PM

Headroom 11.7 dB (NEXT 36-45)

Test Limit: TIA Cat 8 Channel

Cable Type: Cat 8 S/FTP

NVP: 72.0%

Operator: KINGDATA

Software Version: V6.1 Build 3

Limits Version: V7.1

Calibration Start Date:

Main (Module): 05/11/2018

Remote (Module): 05/11/2018

Test Summary: PASS

Model: DSX-8000

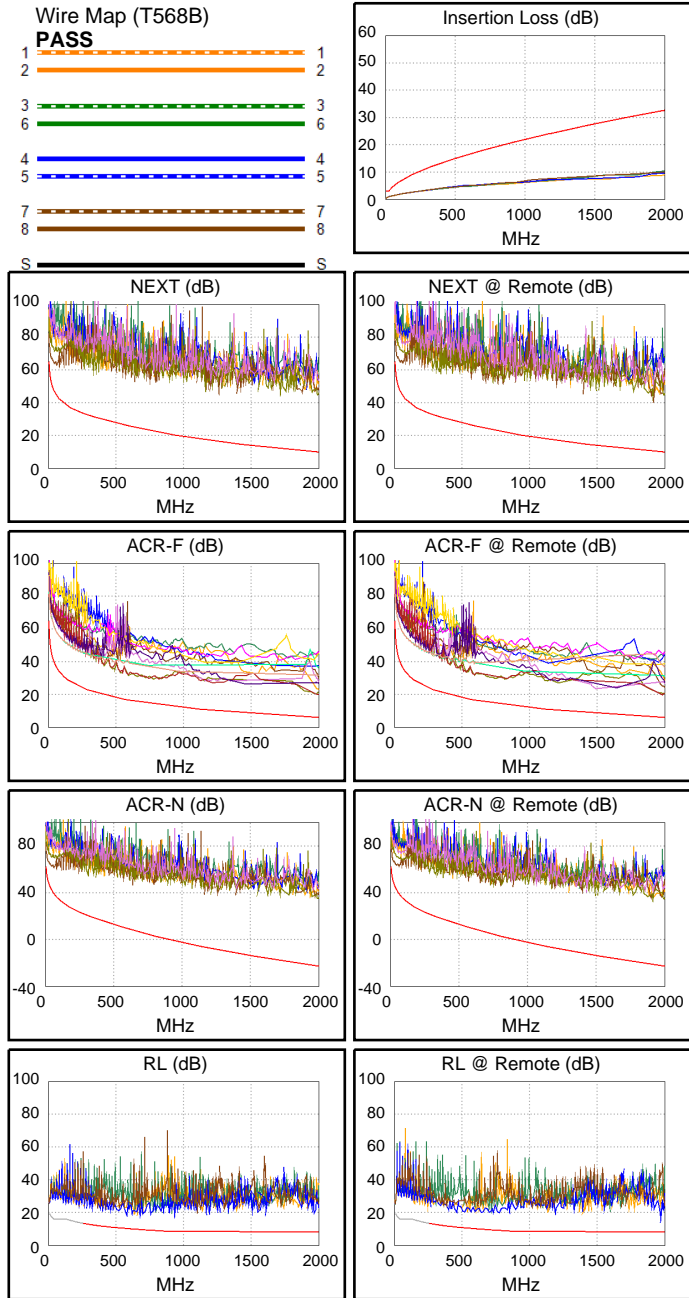
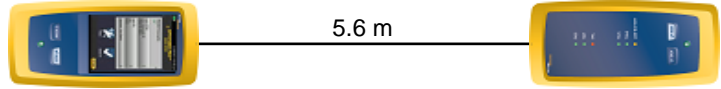
Main S/N: 1747425

Remote S/N: 1747424

Main Adapter: DSX-CHA804

Remote Adapter: DSX-CHA804

Length (m), Limit 30.0	[Pair 12]	5.6
Prop. Delay (ns), Limit 179	[Pair 12]	26
Delay Skew (ns), Limit 17	[Pair 12]	0
Resistance (ohms), Limit 6.40	[Pair 12]	3.38
Insertion Loss Margin (dB)	[Pair 36]	22.4
Frequency (MHz)	[Pair 36]	2000.0
Limit (dB)	[Pair 36]	32.7



Worst Case Margin Worst Case Value

PASS	MAIN	SR	MAIN	SR
Worst Pair	36-45	36-45	36-78	36-45
NEXT (dB)	11.7	13.1	35.0	33.0
Freq. (MHz)	3.5	3.3	1990.	1918.
Limit (dB)	64.7	65.0	9.9	10.4
Worst Pair	36	36	36	36
PS NEXT (dB)	13.8	14.6	34.6	32.7
Freq. (MHz)	3.3	3.1	1974.	1916.
Limit (dB)	62.0	62.0	7.5	7.9

PASS	MAIN	SR	MAIN	SR
Worst Pair	45-36	45-36	45-36	45-36
ACR-F (dB)	13.7	13.7	13.7	13.7
Freq. (MHz)	2000.	1982.	2000.	1982.
Limit (dB)	5.9	6.0	5.9	6.0
Worst Pair	36	36	36	36
PS ACR-F (dB)	14.5	16.0	14.5	16.0
Freq. (MHz)	2000.	1984.	2000.	1984.
Limit (dB)	2.9	3.0	2.9	3.0

N/A	MAIN	SR	MAIN	SR
Worst Pair	36-45	36-45	36-78	36-78
ACR-N (dB)	14.3	15.7	57.7	55.2
Freq. (MHz)	3.5	3.3	1990.	1912.
Limit (dB)	61.7	62.0	-22.7	-21.4
Worst Pair	36	36	36	36
PS ACR-N (dB)	16.4	17.2	56.8	54.9
Freq. (MHz)	3.3	3.1	1974.	1916.
Limit (dB)	59.0	59.0	-24.9	-24.0

PASS	MAIN	SR	MAIN	SR
Worst Pair	45	45	45	45
RL (dB)	8.1	9.0	8.5	9.0
Freq. (MHz)	580.0	1970.	1970.	1970.
Limit (dB)	10.1	8.0	8.0	8.0

Compliant Network Standards:
 10BASE-T 100BASE-TX 100BASE-T4
 1000BASE-T 2.5GBASE-T 5GBASE-T
 10GBASE-T 25GBASE-T 40GBASE-T
 ATM-25 ATM-51 ATM-155
 100VG-AnyLan TR-4 TR-16 Active
 TR-16 Passive



Cable ID: CAT8_FLAT_3M_2

Date / Time: 02/27/2020 02:25:57 PM

Headroom 12.8 dB (NEXT 36-45)

Test Limit: TIA Cat 8 Channel

Cable Type: Cat 8 S/FTP

NVP: 72.0%

Operator: KINGDATA

Software Version: V6.1 Build 3

Limits Version: V7.1

Calibration Start Date:

Main (Module): 05/11/2018

Remote (Module): 05/11/2018

Test Summary: PASS

Model: DSX-8000

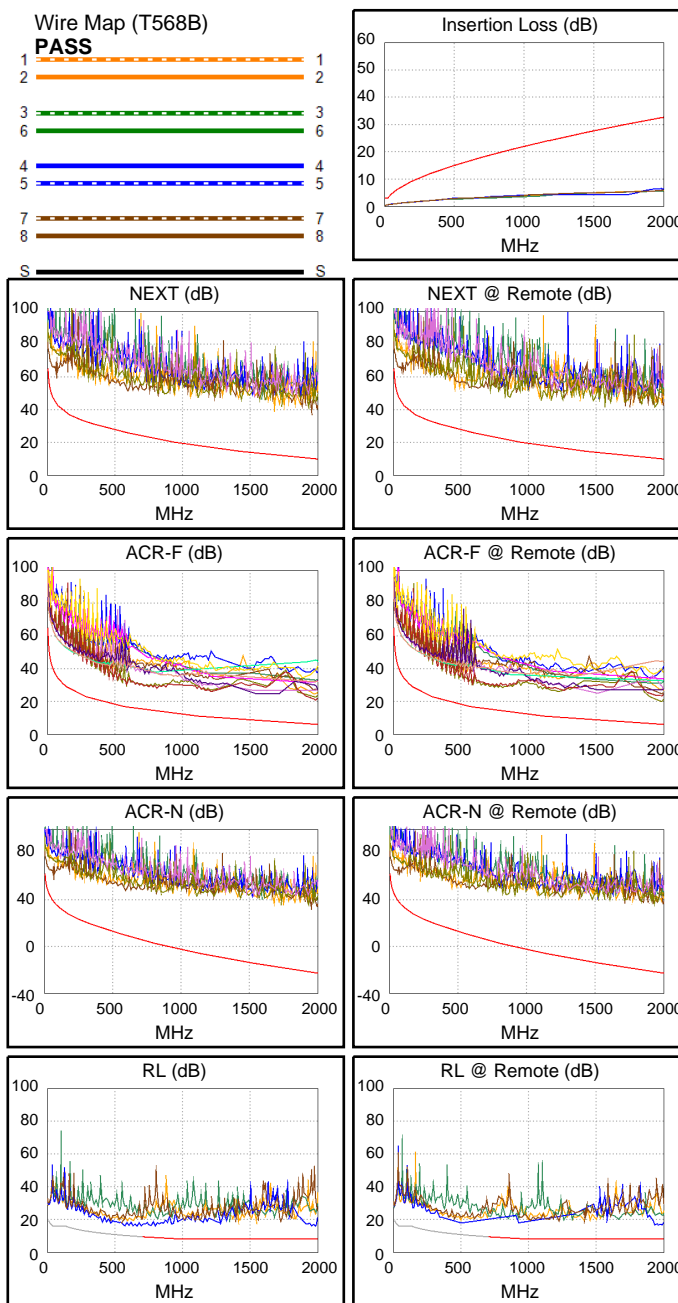
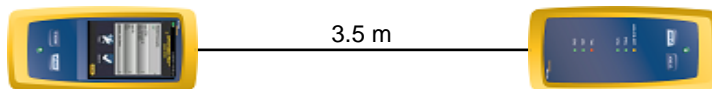
Main S/N: 1747425

Remote S/N: 1747424

Main Adapter: DSX-CHA804

Remote Adapter: DSX-CHA804

Length (m), Limit 30.0	[Pair 12]	3.5
Prop. Delay (ns), Limit 179	[Pair 12]	16
Delay Skew (ns), Limit 17	[Pair 12]	0
Resistance (ohms), Limit 6.40	[Pair 12]	2.03
Insertion Loss Margin (dB)	[Pair 45]	26.0
Frequency (MHz)	[Pair 45]	1982.0
Limit (dB)	[Pair 45]	32.5



Worst Case Margin Worst Case Value

PASS	MAIN	SR	MAIN	SR
Worst Pair	36-45	36-45	36-45	36-45
NEXT (dB)	12.8	12.9	29.3	31.1
Freq. (MHz)	3.5	3.8	1954.	1958.
Limit (dB)	64.7	64.3	10.2	10.1
Worst Pair	36	36	36	36
PS NEXT (dB)	14.9	15.4	31.1	31.3
Freq. (MHz)	3.3	3.8	1956.	1956.
Limit (dB)	62.0	61.0	7.6	7.6

PASS	MAIN	SR	MAIN	SR
Worst Pair	36-45	36-45	45-36	36-45
ACR-F (dB)	13.4	13.2	14.8	13.9
Freq. (MHz)	585.0	584.0	1984.	1982.
Limit (dB)	16.6	16.6	6.0	6.0
Worst Pair	36	45	36	45
PS ACR-F (dB)	15.9	15.8	15.9	16.6
Freq. (MHz)	1984.	584.0	1984.	1982.
Limit (dB)	3.0	13.6	3.0	3.0

N/A	MAIN	SR	MAIN	SR
Worst Pair	36-45	36-45	36-45	36-45
ACR-N (dB)	15.6	15.7	55.2	57.0
Freq. (MHz)	3.5	3.8	1954.	1958.
Limit (dB)	61.7	61.3	-22.1	-22.1
Worst Pair	36	36	45	36
PS ACR-N (dB)	17.7	18.2	57.5	58.1
Freq. (MHz)	3.3	3.8	1954.	1956.
Limit (dB)	59.0	58.0	-24.6	-24.6

PASS	MAIN	SR	MAIN	SR
Worst Pair	45	45	45	45
RL (dB)	6.2	6.7	6.3	6.7
Freq. (MHz)	600.0	726.0	761.0	726.0
Limit (dB)	10.0	9.3	9.1	9.3

Compliant Network Standards:

10BASE-T	100BASE-TX	100BASE-T4
1000BASE-T	2.5GBASE-T	5GBASE-T
10GBASE-T	25GBASE-T	40GBASE-T
ATM-25	ATM-51	ATM-155
100VG-AnyLan	TR-4	TR-16 Active
TR-16 Passive		



Cable ID: CAT8_FLAT_3M_1

Date / Time: 02/27/2020 02:25:00 PM

Headroom 12.9 dB (NEXT 36-45)

Test Limit: TIA Cat 8 Channel

Cable Type: Cat 8 S/FTP

NVP: 72.0%

Operator: KINGDATA

Software Version: V6.1 Build 3

Limits Version: V7.1

Calibration Start Date:

Main (Module): 05/11/2018

Remote (Module): 05/11/2018

Test Summary: PASS

Model: DSX-8000

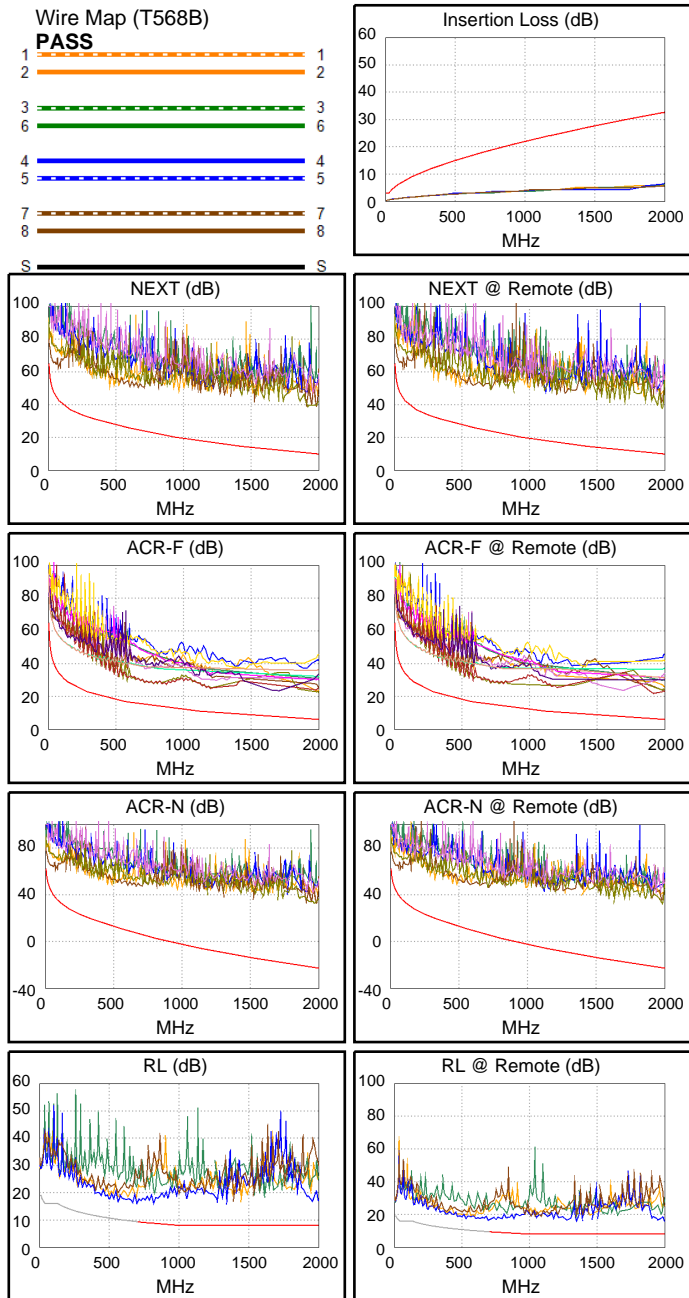
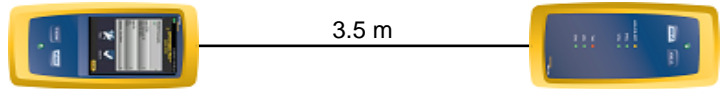
Main S/N: 1747425

Remote S/N: 1747424

Main Adapter: DSX-CHA804

Remote Adapter: DSX-CHA804

Length (m), Limit 30.0	[Pair 12]	3.5
Prop. Delay (ns), Limit 179	[Pair 12]	16
Delay Skew (ns), Limit 17	[Pair 12]	0
Resistance (ohms), Limit 6.40	[Pair 12]	2.04
Insertion Loss Margin (dB)	[Pair 45]	26.2
Frequency (MHz)	[Pair 45]	2000.0
Limit (dB)	[Pair 45]	32.7



Worst Case Margin Worst Case Value

PASS	MAIN	SR	MAIN	SR
Worst Pair	36-45	36-45	36-78	36-78
NEXT (dB)	12.9	12.9	27.9	27.5
Freq. (MHz)	3.6	3.8	1972.	1980.
Limit (dB)	64.5	64.3	10.0	10.0
Worst Pair	36	36	36	36
PS NEXT (dB)	15.2	15.4	28.6	28.2
Freq. (MHz)	3.6	3.8	1980.	1978.
Limit (dB)	61.2	61.0	7.5	7.5

PASS	MAIN	SR	MAIN	SR
Worst Pair	36-45	36-45	36-45	45-36
ACR-F (dB)	13.1	13.2	14.7	15.4
Freq. (MHz)	583.0	713.0	1912.	1942.
Limit (dB)	16.7	14.9	6.3	6.2
Worst Pair	36	36	36	36
PS ACR-F (dB)	15.5	15.5	17.2	17.3
Freq. (MHz)	583.0	584.0	1978.	1942.
Limit (dB)	13.7	13.6	3.0	3.2

N/A	MAIN	SR	MAIN	SR
Worst Pair	36-45	36-45	36-78	36-78
ACR-N (dB)	15.7	15.7	54.8	54.5
Freq. (MHz)	3.6	3.8	1972.	1980.
Limit (dB)	61.5	61.3	-22.4	-22.5
Worst Pair	36	36	36	36
PS ACR-N (dB)	18.0	18.2	54.9	54.5
Freq. (MHz)	3.6	3.8	1980.	1978.
Limit (dB)	58.2	58.0	-25.0	-25.0

PASS	MAIN	SR	MAIN	SR
Worst Pair	45	45	45	45
RL (dB)	6.3	6.9	6.3	7.8
Freq. (MHz)	662.0	698.0	662.0	1998.
Limit (dB)	9.6	9.4	9.6	8.0

Compliant Network Standards:
 10BASE-T 100BASE-TX 100BASE-T4
 1000BASE-T 2.5GBASE-T 5GBASE-T
 10GBASE-T 25GBASE-T 40GBASE-T
 ATM-25 ATM-51 ATM-155
 100VG-AnyLan TR-4 TR-16 Active
 TR-16 Passive



Cable ID: CAT8_FLAT_2M_2

Date / Time: 02/27/2020 02:24:10 PM

Headroom 12.8 dB (NEXT 36-45)

Test Limit: TIA Cat 8 Channel

Cable Type: Cat 8 S/FTP

NVP: 72.0%

Operator: KINGDATA

Software Version: V6.1 Build 3

Limits Version: V7.1

Calibration Start Date:

Main (Module): 05/11/2018

Remote (Module): 05/11/2018

Test Summary: PASS

Model: DSX-8000

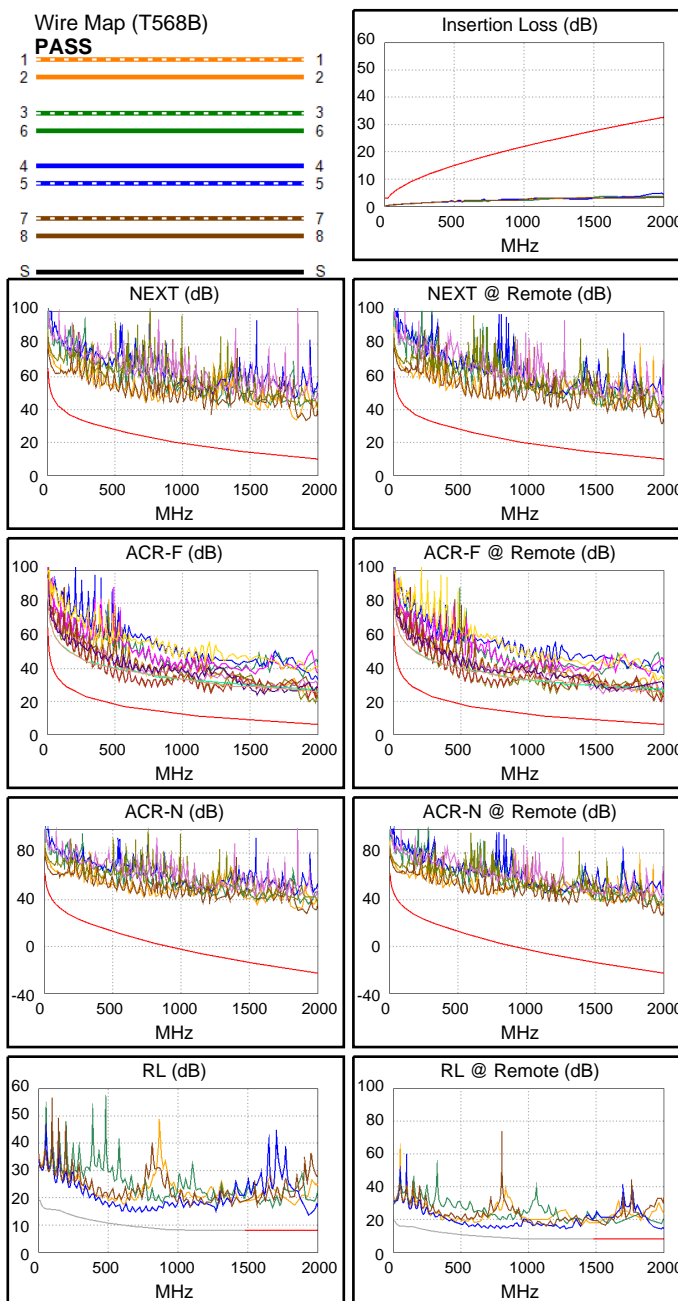
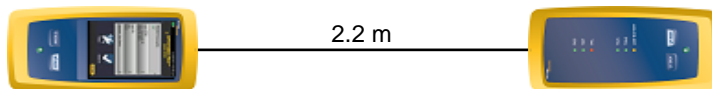
Main S/N: 1747425

Remote S/N: 1747424

Main Adapter: DSX-CHA804

Remote Adapter: DSX-CHA804

Length (m), Limit 30.0	[Pair 36]	2.2
Prop. Delay (ns), Limit 179	[Pair 12]	11
Delay Skew (ns), Limit 17	[Pair 12]	1
Resistance (ohms), Limit 6.40	[Pair 12]	1.32
Insertion Loss Margin (dB)	[Pair 45]	27.0
Frequency (MHz)	[Pair 45]	1928.0
Limit (dB)	[Pair 45]	32.0



Worst Case Margin Worst Case Value

PASS	MAIN	SR	MAIN	SR
Worst Pair	36-45	36-45	36-45	36-45
NEXT (dB)	12.8	13.5	21.7	21.5
Freq. (MHz)	3.5	3.5	1930.	1986.
Limit (dB)	64.7	64.7	10.3	9.9
Worst Pair	36	36	36	36
PS NEXT (dB)	14.3	14.9	23.0	22.8
Freq. (MHz)	3.5	3.3	1844.	1988.
Limit (dB)	61.5	62.0	8.4	7.4

PASS	MAIN	SR	MAIN	SR
Worst Pair	36-45	36-45	36-45	45-36
ACR-F (dB)	12.4	13.7	12.5	13.8
Freq. (MHz)	1976.	723.0	1978.	1978.
Limit (dB)	6.1	14.8	6.0	6.0
Worst Pair	45	36	45	36
PS ACR-F (dB)	14.7	15.6	14.8	15.6
Freq. (MHz)	1976.	1978.	1978.	1978.
Limit (dB)	3.1	3.0	3.0	3.0

N/A	MAIN	SR	MAIN	SR
Worst Pair	36-45	36-45	36-45	36-45
ACR-N (dB)	15.7	16.4	48.6	49.3
Freq. (MHz)	3.5	3.5	1928.	1986.
Limit (dB)	61.7	61.7	-21.6	-22.6
Worst Pair	36	36	45	45
PS ACR-N (dB)	17.2	17.8	50.7	51.4
Freq. (MHz)	3.5	3.3	1928.	1986.
Limit (dB)	58.5	59.0	-24.2	-25.1

PASS	MAIN	SR	MAIN	SR
Worst Pair	45	45	45	45
RL (dB)	4.6	6.0	4.6	6.0
Freq. (MHz)	1946.	1946.	1946.	1946.
Limit (dB)	8.0	8.0	8.0	8.0

Compliant Network Standards:
 10BASE-T 100BASE-TX 100BASE-T4
 1000BASE-T 2.5GBASE-T 5GBASE-T
 10GBASE-T 25GBASE-T 40GBASE-T
 ATM-25 ATM-51 ATM-155
 100VG-AnyLan TR-4 TR-16 Active
 TR-16 Passive



Cable ID: CAT8_FLAT_2M_1

Date / Time: 02/27/2020 02:23:31 PM

Headroom 11.8 dB (NEXT 36-45)

Test Limit: TIA Cat 8 Channel

Cable Type: Cat 8 S/FTP

NVP: 72.0%

Operator: KINGDATA

Software Version: V6.1 Build 3

Limits Version: V7.1

Calibration Start Date:

Main (Module): 05/11/2018

Remote (Module): 05/11/2018

Test Summary: PASS

Model: DSX-8000

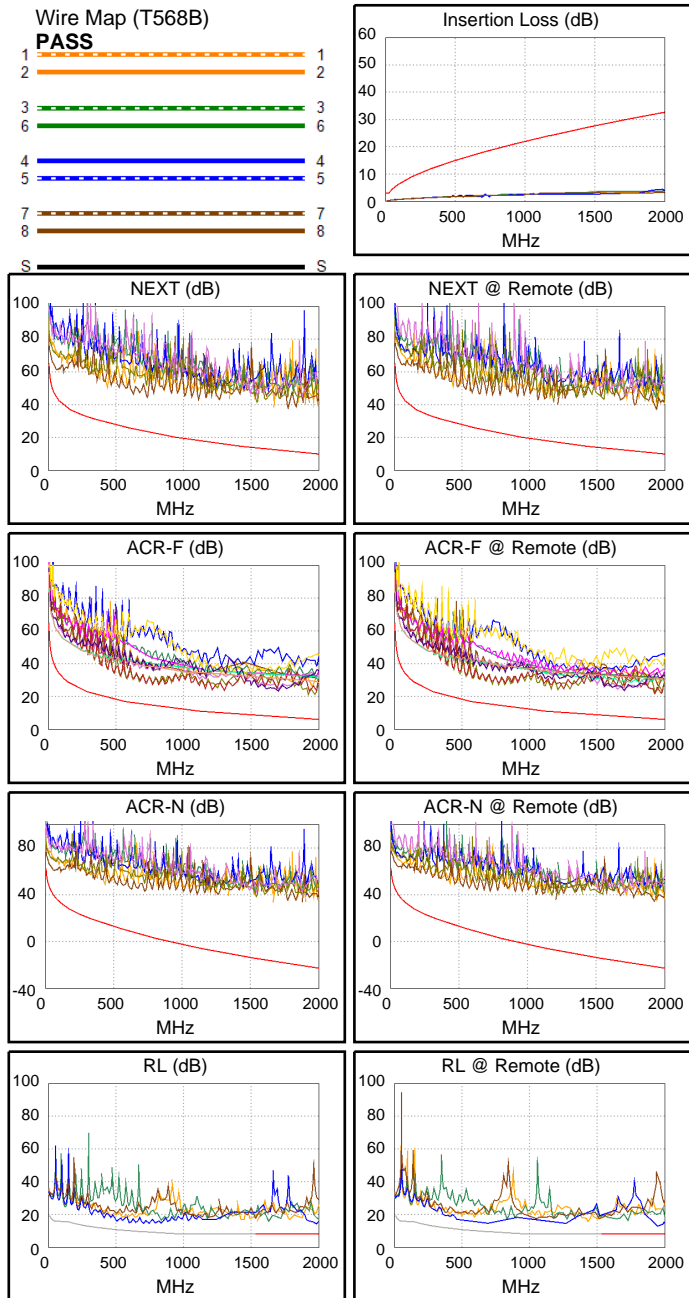
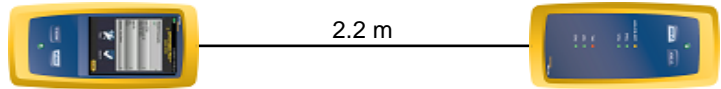
Main S/N: 1747425

Remote S/N: 1747424

Main Adapter: DSX-CHA804

Remote Adapter: DSX-CHA804

Length (m), Limit 30.0	[Pair 36]	2.2
Prop. Delay (ns), Limit 179	[Pair 12]	11
Delay Skew (ns), Limit 17	[Pair 12]	1
Resistance (ohms), Limit 6.40	[Pair 12]	1.34
Insertion Loss Margin (dB)	[Pair 45]	28.0
Frequency (MHz)	[Pair 45]	1980.0
Limit (dB)	[Pair 45]	32.5



Worst Case Margin Worst Case Value

PASS	MAIN	SR	MAIN	SR
Worst Pair	36-45	36-45	36-45	36-45
NEXT (dB)	11.8	13.3	26.5	26.9
Freq. (MHz)	3.4	3.1	1772.	1940.
Limit (dB)	65.0	65.0	11.5	10.3
Worst Pair	36	36	45	36
PS NEXT (dB)	13.8	15.0	28.3	27.2
Freq. (MHz)	3.3	3.3	1772.	1942.
Limit (dB)	62.0	62.0	9.0	7.7

PASS	MAIN	SR	MAIN	SR
Worst Pair	36-45	36-45	36-45	36-45
ACR-F (dB)	13.1	12.6	14.6	15.4
Freq. (MHz)	721.0	723.0	1926.	1976.
Limit (dB)	14.8	14.8	6.3	6.1
Worst Pair	36	45	45	45
PS ACR-F (dB)	15.2	15.2	17.0	17.5
Freq. (MHz)	724.0	723.0	1974.	1976.
Limit (dB)	11.8	11.8	3.1	3.1

N/A	MAIN	SR	MAIN	SR
Worst Pair	36-45	36-45	36-45	36-45
ACR-N (dB)	14.7	16.2	55.4	54.7
Freq. (MHz)	3.4	3.1	1832.	1938.
Limit (dB)	62.0	62.0	-20.0	-21.8
Worst Pair	36	36	36	36
PS ACR-N (dB)	16.7	17.9	58.8	55.5
Freq. (MHz)	3.3	3.3	1994.	1942.
Limit (dB)	59.0	59.0	-25.2	-24.4

PASS	MAIN	SR	MAIN	SR
Worst Pair	45	45	45	45
RL (dB)	6.2	4.7	6.2	4.7
Freq. (MHz)	1944.	1950.	1944.	1950.
Limit (dB)	8.0	8.0	8.0	8.0

Compliant Network Standards:

10BASE-T	100BASE-TX	100BASE-T4
1000BASE-T	2.5GBASE-T	5GBASE-T
10GBASE-T	25GBASE-T	40GBASE-T
ATM-25	ATM-155	ATM-155
100VG-AnyLan	TR-4	TR-16 Active
TR-16 Passive		



Cable ID: CAT8_FLAT_1.5M_2

Date / Time: 02/27/2020 02:22:51 PM

Headroom 11.3 dB (NEXT 36-45)

Test Limit: TIA Cat 8 Channel

Cable Type: Cat 8 S/FTP

NVP: 72.0%

Operator: KINGDATA

Software Version: V6.1 Build 3

Limits Version: V7.1

Calibration Start Date:

Main (Module): 05/11/2018

Remote (Module): 05/11/2018

Test Summary: PASS

Model: DSX-8000

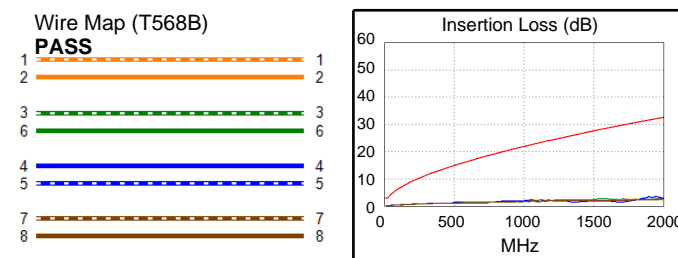
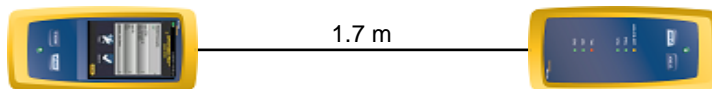
Main S/N: 1747425

Remote S/N: 1747424

Main Adapter: DSX-CHA804

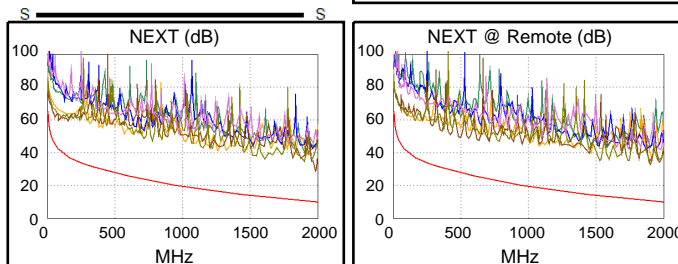
Remote Adapter: DSX-CHA804

Length (m), Limit 30.0	[Pair 12]	1.7
Prop. Delay (ns), Limit 179	[Pair 12]	8
Delay Skew (ns), Limit 17	[Pair 12]	0
Resistance (ohms), Limit 6.40	[Pair 12]	0.97
Insertion Loss Margin (dB)	[Pair 45]	28.4
Frequency (MHz)	[Pair 45]	1962.0
Limit (dB)	[Pair 45]	32.3

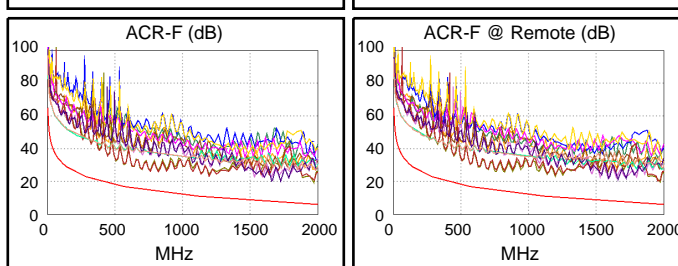


Worst Case Margin Worst Case Value

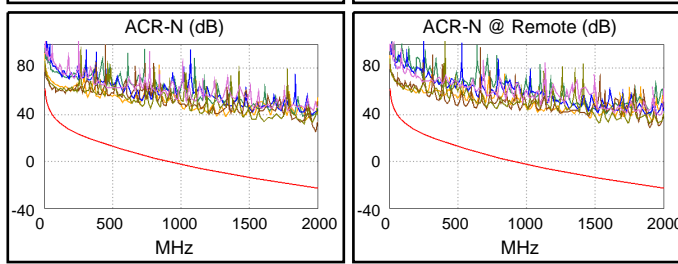
PASS	MAIN	SR	MAIN	SR
Worst Pair	36-45	36-45	36-45	36-45
NEXT (dB)	11.3	14.2	18.7	22.2
Freq. (MHz)	4.3	3.5	1982.	1898.
Limit (dB)	63.4	64.7	10.0	10.6
Worst Pair	36	36	36	36
PS NEXT (dB)	13.4	15.3	20.8	21.9
Freq. (MHz)	4.3	3.4	1980.	1904.
Limit (dB)	60.1	61.7	7.5	8.0



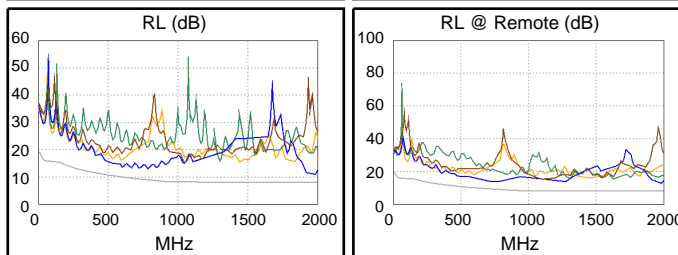
PASS	MAIN	SR	MAIN	SR
Worst Pair	36-45	36-45	36-45	36-45
ACR-F (dB)	11.8	11.6	12.0	12.0
Freq. (MHz)	693.0	759.0	1962.	1962.
Limit (dB)	15.2	14.4	6.1	6.1
Worst Pair	36	45	45	45
PS ACR-F (dB)	14.3	14.3	14.6	14.8
Freq. (MHz)	1590.	759.0	1962.	1962.
Limit (dB)	4.9	11.4	3.1	3.1



N/A	MAIN	SR	MAIN	SR
Worst Pair	36-45	36-45	36-45	36-45
ACR-N (dB)	14.2	17.1	48.3	50.2
Freq. (MHz)	4.3	3.5	1982.	1898.
Limit (dB)	60.4	61.7	-22.6	-21.1
Worst Pair	36	36	36	36
PS ACR-N (dB)	16.3	18.2	50.5	51.1
Freq. (MHz)	4.3	3.4	1980.	1904.
Limit (dB)	57.1	58.7	-25.0	-23.7



PASS	MAIN	SR	MAIN	SR
Worst Pair	45	45	45	45
RL (dB)	2.9	4.2	2.9	4.2
Freq. (MHz)	1980.	1972.	1980.	1972.
Limit (dB)	8.0	8.0	8.0	8.0



Compliant Network Standards:

10BASE-T	100BASE-TX	100BASE-T4
1000BASE-T	2.5GBASE-T	5GBASE-T
10GBASE-T	25GBASE-T	40GBASE-T
ATM-25	ATM-51	ATM-155
100VG-AnyLan	TR-4	TR-16 Active
TR-16 Passive		



Cable ID: CAT8_FLAT_1.5M_1

Date / Time: 02/27/2020 02:21:38 PM

Headroom 11.4 dB (NEXT 36-45)

Test Limit: TIA Cat 8 Channel

Cable Type: Cat 8 S/FTP

NVP: 72.0%

Operator: KINGDATA

Software Version: V6.1 Build 3

Limits Version: V7.1

Calibration Start Date:

Main (Module): 05/11/2018

Remote (Module): 05/11/2018

Test Summary: PASS

Model: DSX-8000

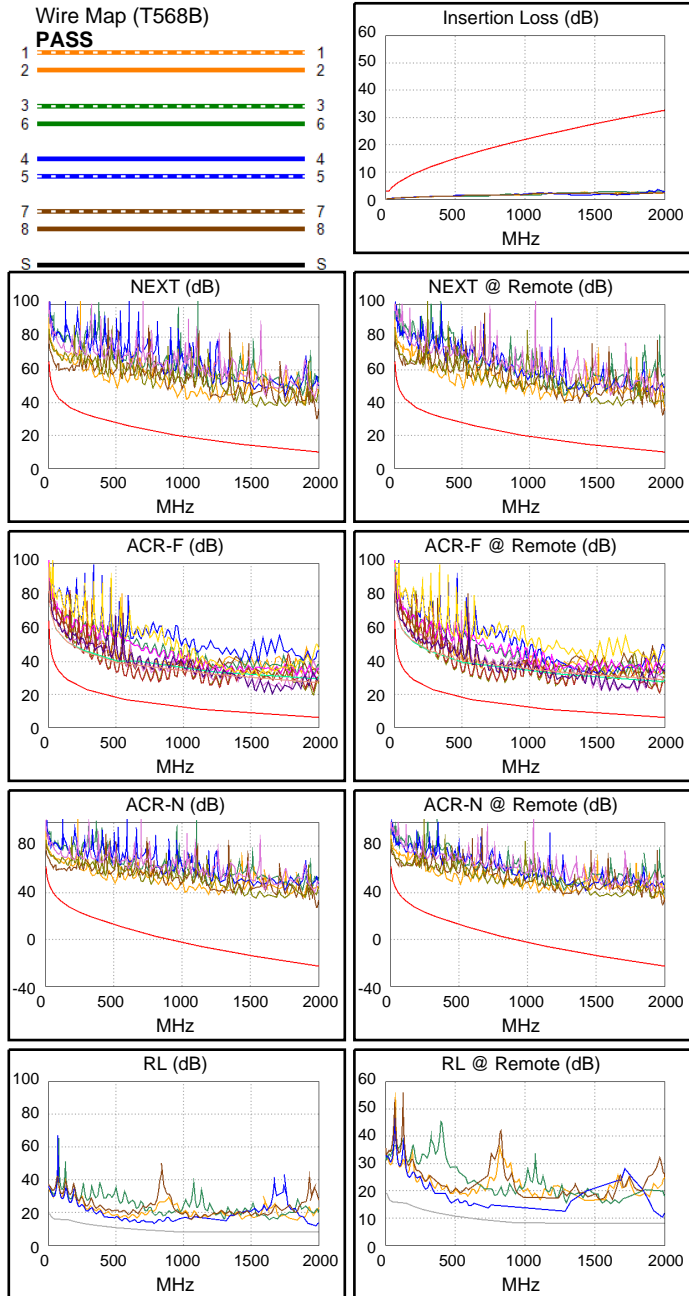
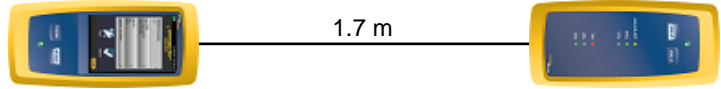
Main S/N: 1747425

Remote S/N: 1747424

Main Adapter: DSX-CHA804

Remote Adapter: DSX-CHA804

Length (m), Limit 30.0	[Pair 12]	1.7
Prop. Delay (ns), Limit 179	[Pair 12]	8
Delay Skew (ns), Limit 17	[Pair 12]	0
Resistance (ohms), Limit 6.40	[Pair 78]	1.01
Insertion Loss Margin (dB)	[Pair 45]	28.4
Frequency (MHz)	[Pair 45]	1962.0
Limit (dB)	[Pair 45]	32.3



Worst Case Margin Worst Case Value

PASS	MAIN	SR	MAIN	SR
Worst Pair	36-45	36-45	36-45	36-45
NEXT (dB)	11.4	12.8	20.3	22.7
Freq. (MHz)	4.6	3.6	1986.	1984.
Limit (dB)	62.8	64.5	9.9	9.9
Worst Pair	36	36	36	36
PS NEXT (dB)	13.5	14.0	22.4	24.3
Freq. (MHz)	4.4	3.4	1984.	1984.
Limit (dB)	59.9	61.7	7.4	7.4

PASS	MAIN	SR	MAIN	SR
Worst Pair	78-36	36-45	36-45	36-45
ACR-F (dB)	12.8	12.8	13.7	14.9
Freq. (MHz)	1662.	693.0	1960.	1960.
Limit (dB)	7.6	15.2	6.1	6.1
Worst Pair	36	36	45	45
PS ACR-F (dB)	15.0	15.3	16.1	16.9
Freq. (MHz)	1658.	759.0	1962.	1960.
Limit (dB)	4.6	11.4	3.1	3.1

N/A	MAIN	SR	MAIN	SR
Worst Pair	36-45	36-45	36-45	36-45
ACR-N (dB)	14.3	15.7	49.9	52.3
Freq. (MHz)	4.6	3.6	1984.	1984.
Limit (dB)	59.8	61.5	-22.6	-22.6
Worst Pair	36	36	36	36
PS ACR-N (dB)	16.4	16.9	51.8	53.7
Freq. (MHz)	4.4	3.4	1984.	1984.
Limit (dB)	56.9	58.7	-25.1	-25.1

PASS	MAIN	SR	MAIN	SR
Worst Pair	45	45	45	45
RL (dB)	3.8	2.1	3.8	2.1
Freq. (MHz)	1976.	1980.	1976.	1980.
Limit (dB)	8.0	8.0	8.0	8.0

Compliant Network Standards:
 10BASE-T 100BASE-TX 100BASE-T4
 1000BASE-T 2.5GBASE-T 5GBASE-T
 10GBASE-T 25GBASE-T 40GBASE-T
 ATM-25 ATM-51 ATM-155
 100VG-AnyLan TR-4 TR-16 Active
 TR-16 Passive



Cable ID: CAT8_FLAT_1M_2

Date / Time: 02/27/2020 02:20:50 PM

Headroom 11.3 dB (NEXT 36-45)

Test Limit: TIA Cat 8 Channel

Cable Type: Cat 8 S/FTP

NVP: 72.0%

Operator: KINGDATA

Software Version: V6.1 Build 3

Limits Version: V7.1

Calibration Start Date:

Main (Module): 05/11/2018

Remote (Module): 05/11/2018

Test Summary: PASS

Model: DSX-8000

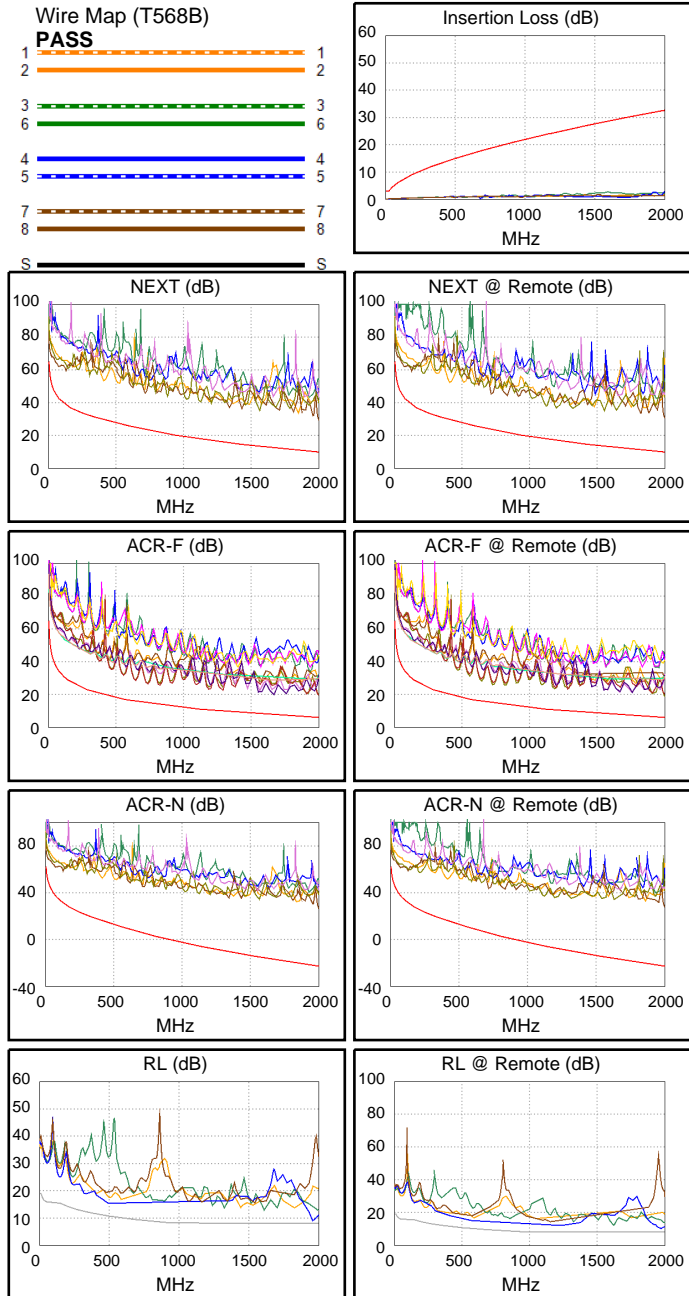
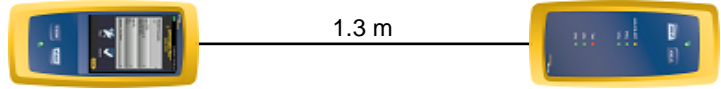
Main S/N: 1747425

Remote S/N: 1747424

Main Adapter: DSX-CHA804

Remote Adapter: DSX-CHA804

Length (m), Limit 30.0	[Pair 12]	1.3
Prop. Delay (ns), Limit 179	[Pair 12]	6
Delay Skew (ns), Limit 17	[Pair 12]	0
Resistance (ohms), Limit 6.40	[Pair 12]	0.65
Insertion Loss Margin (dB)	[Pair 45]	29.9
Frequency (MHz)	[Pair 45]	2000.0
Limit (dB)	[Pair 45]	32.7



Worst Case Margin Worst Case Value

PASS	MAIN	SR	MAIN	SR
Worst Pair	36-45	36-45	36-45	36-45
NEXT (dB)	11.3	11.8	19.3	20.8
Freq. (MHz)	4.0	3.8	2000.	2000.
Limit (dB)	63.8	64.3	9.8	9.8
Worst Pair	36	36	36	36
PS NEXT (dB)	13.6	13.8	21.2	23.1
Freq. (MHz)	4.0	3.8	2000.	2000.
Limit (dB)	60.5	61.0	7.3	7.3

PASS	MAIN	SR	MAIN	SR
Worst Pair	45-36	36-45	36-45	36-45
ACR-F (dB)	11.6	11.1	13.6	12.8
Freq. (MHz)	731.0	731.0	2000.	2000.
Limit (dB)	14.7	14.7	5.9	5.9
Worst Pair	36	45	36	45
PS ACR-F (dB)	13.7	13.8	13.8	15.6
Freq. (MHz)	1660.	731.0	1664.	2000.
Limit (dB)	4.6	11.7	4.5	2.9

N/A	MAIN	SR	MAIN	SR
Worst Pair	36-45	36-45	36-45	36-45
ACR-N (dB)	14.3	14.8	49.2	50.7
Freq. (MHz)	4.0	3.8	2000.	2000.
Limit (dB)	60.8	61.3	-22.9	-22.9
Worst Pair	36	36	45	45
PS ACR-N (dB)	16.6	16.8	51.4	52.9
Freq. (MHz)	4.0	3.8	2000.	2000.
Limit (dB)	57.5	58.0	-25.3	-25.3

N/A	MAIN	SR	MAIN	SR
Worst Pair	45	45	45	45
RL (dB)	0.7	1.5	0.7	1.5
Freq. (MHz)	1962.	1962.	1962.	1962.
Limit (dB)	8.0	8.0	8.0	8.0

Compliant Network Standards:
 10BASE-T 100BASE-TX 100BASE-T4
 1000BASE-T 2.5GBASE-T 5GBASE-T
 10GBASE-T 25GBASE-T 40GBASE-T
 ATM-25 ATM-51 ATM-155
 100VG-AnyLan TR-4 TR-16 Active
 TR-16 Passive



Cable ID: CAT8_FLAT_1M_1

Date / Time: 02/27/2020 02:19:46 PM

Headroom 12.6 dB (NEXT 36-45)

Test Limit: TIA Cat 8 Channel

Cable Type: Cat 8 S/FTP

NVP: 72.0%

Operator: KINGDATA

Software Version: V6.1 Build 3

Limits Version: V7.1

Calibration Start Date:

Main (Module): 05/11/2018

Remote (Module): 05/11/2018

Test Summary: PASS

Model: DSX-8000

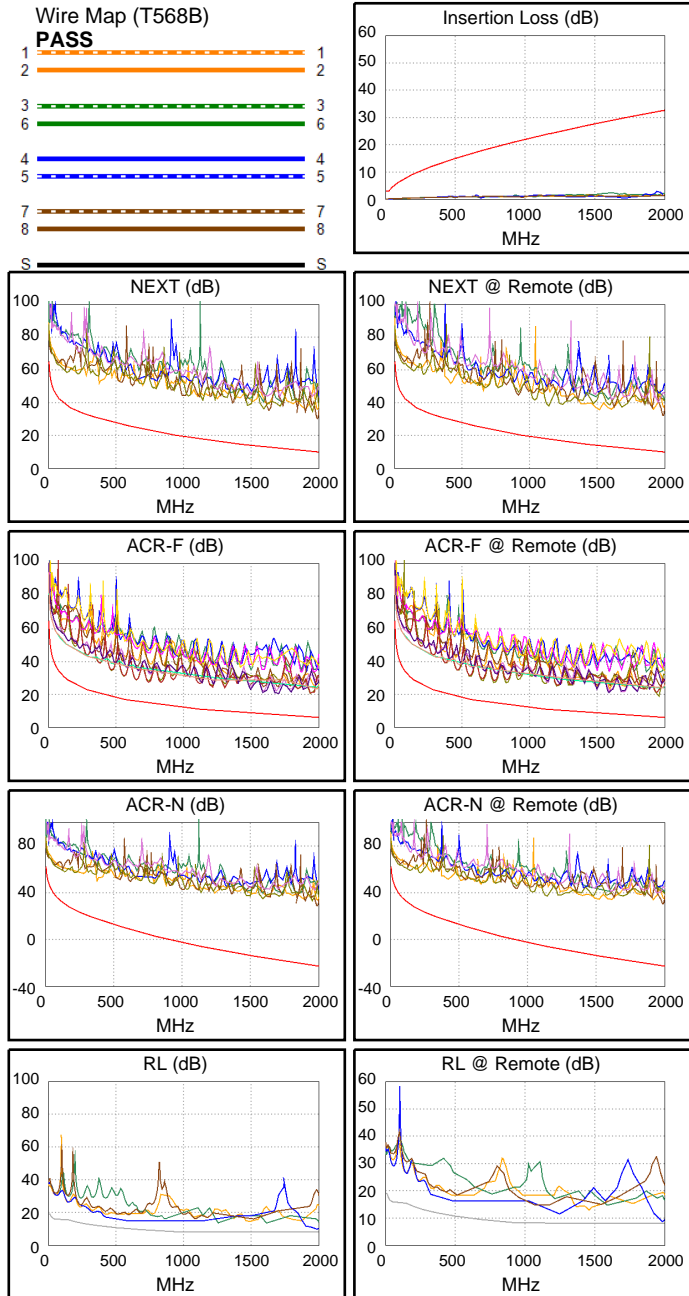
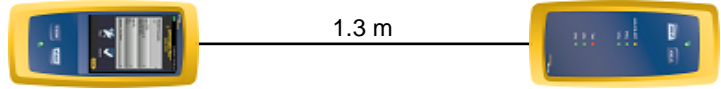
Main S/N: 1747425

Remote S/N: 1747424

Main Adapter: DSX-CHA804

Remote Adapter: DSX-CHA804

Length (m), Limit 30.0	[Pair 12]	1.3
Prop. Delay (ns), Limit 179	[Pair 12]	6
Delay Skew (ns), Limit 17	[Pair 12]	0
Resistance (ohms), Limit 6.40	[Pair 12]	0.63
Insertion Loss Margin (dB)	[Pair 45]	29.3
Frequency (MHz)	[Pair 45]	1958.0
Limit (dB)	[Pair 45]	32.3



Worst Case Margin Worst Case Value

PASS	MAIN	SR	MAIN	SR
Worst Pair	36-45	36-45	36-45	36-45
NEXT (dB)	12.6	13.4	20.4	22.2
Freq. (MHz)	4.9	3.5	1988.	1986.
Limit (dB)	62.4	64.7	9.9	9.9
Worst Pair	36	36	36	36
PS NEXT (dB)	14.3	14.8	21.8	23.4
Freq. (MHz)	4.9	3.3	1990.	1990.
Limit (dB)	59.1	62.0	7.4	7.4

PASS	MAIN	SR	MAIN	SR
Worst Pair	78-36	36-45	36-45	36-45
ACR-F (dB)	12.7	12.5	13.6	12.5
Freq. (MHz)	1690.	1952.	1948.	1952.
Limit (dB)	7.4	6.2	6.2	6.2
Worst Pair	36	36	36	45
PS ACR-F (dB)	13.7	13.6	14.1	14.9
Freq. (MHz)	1586.	1592.	1688.	1958.
Limit (dB)	5.0	4.9	4.4	3.1

N/A	MAIN	SR	MAIN	SR
Worst Pair	36-45	36-45	36-45	36-45
ACR-N (dB)	15.6	16.4	51.5	53.1
Freq. (MHz)	4.9	3.5	1988.	1986.
Limit (dB)	59.4	61.7	-22.7	-22.6
Worst Pair	36	36	36	36
PS ACR-N (dB)	17.3	17.8	52.2	53.8
Freq. (MHz)	4.9	3.3	1990.	1990.
Limit (dB)	56.1	59.0	-25.2	-25.2

PASS	MAIN	SR	MAIN	SR
Worst Pair	45	45	36	45
RL (dB)	3.0	2.3	2.8	2.3
Freq. (MHz)	1958.	1958.	1646.	1958.
Limit (dB)	8.0	8.0	8.0	8.0

Compliant Network Standards:
 10BASE-T 100BASE-TX 100BASE-T4
 1000BASE-T 2.5GBASE-T 5GBASE-T
 10GBASE-T 25GBASE-T 40GBASE-T
 ATM-25 ATM-51 ATM-155
 100VG-AnyLan TR-4 TR-16 Active
 TR-16 Passive



Cable ID: CAT8_FLAT_0.5M_2

Date / Time: 02/27/2020 02:18:57 PM

Headroom 14.5 dB (NEXT 36-45)

Test Limit: TIA Cat 8 Channel

Cable Type: Cat 8 S/FTP

NVP: 72.0%

Operator: KINGDATA

Software Version: V6.1 Build 3

Limits Version: V7.1

Calibration Start Date:

Main (Module): 05/11/2018

Remote (Module): 05/11/2018

Test Summary: PASS

Model: DSX-8000

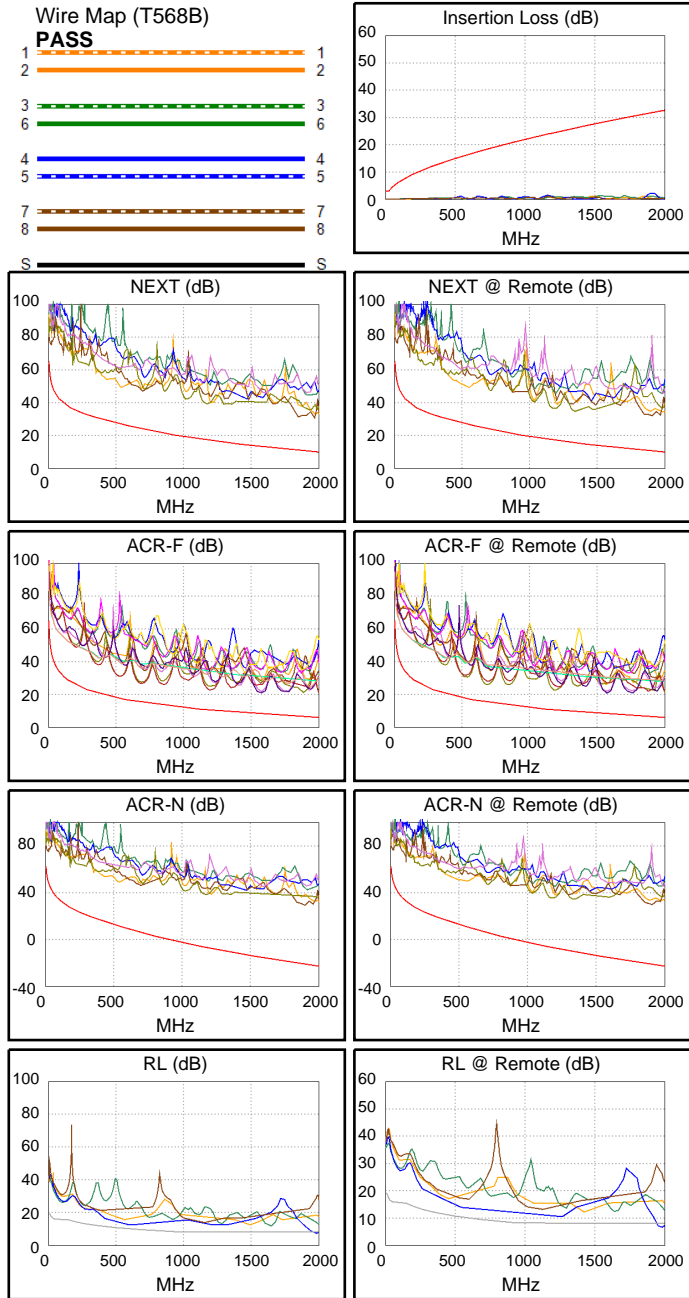
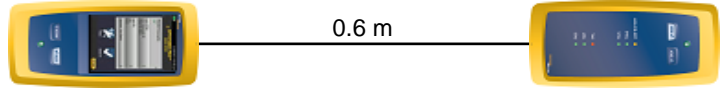
Main S/N: 1747425

Remote S/N: 1747424

Main Adapter: DSX-CHA804

Remote Adapter: DSX-CHA804

Length (m), Limit 30.0	[Pair 12]	0.6
Prop. Delay (ns), Limit 179	[Pair 12]	3
Delay Skew (ns), Limit 17	[Pair 12]	0
Resistance (ohms), Limit 6.40	[Pair 12]	0.32
Insertion Loss Margin (dB)	[Pair 45]	29.6
Frequency (MHz)	[Pair 45]	1916.0
Limit (dB)	[Pair 45]	31.9



Worst Case Margin Worst Case Value

PASS	MAIN	SR	MAIN	SR
Worst Pair	36-45	36-45	36-45	36-45
NEXT (dB)	14.5	15.6	20.3	21.9
Freq. (MHz)	4.4	3.6	1964.	1960.
Limit (dB)	63.2	64.5	10.1	10.1
Worst Pair	36	36	36	36
PS NEXT (dB)	16.9	18.0	20.6	21.8
Freq. (MHz)	4.4	3.6	1964.	1964.
Limit (dB)	59.9	61.2	7.6	7.6

PASS	MAIN	SR	MAIN	SR
Worst Pair	45-36	36-45	78-36	78-36
ACR-F (dB)	11.4	10.7	12.8	12.8
Freq. (MHz)	693.0	684.0	1564.	1576.
Limit (dB)	15.2	15.3	8.1	8.0
Worst Pair	36	45	36	36
PS ACR-F (dB)	13.6	13.4	14.1	14.7
Freq. (MHz)	693.0	684.0	1564.	1774.
Limit (dB)	12.2	12.3	5.1	4.0

N/A	MAIN	SR	MAIN	SR
Worst Pair	36-45	36-45	36-45	36-45
ACR-N (dB)	17.5	18.6	50.3	51.0
Freq. (MHz)	4.4	3.6	1898.	1906.
Limit (dB)	60.2	61.5	-21.1	-21.3
Worst Pair	36	36	36	36
PS ACR-N (dB)	19.9	21.0	52.2	53.4
Freq. (MHz)	4.4	3.6	1964.	1964.
Limit (dB)	56.9	58.2	-24.8	-24.8

N/A	MAIN	SR	MAIN	SR
Worst Pair	45	45	45	45
RL (dB)	-1.0	-1.5	-1.0	-1.5
Freq. (MHz)	1968.	1972.	1968.	1972.
Limit (dB)	8.0	8.0	8.0	8.0

Compliant Network Standards:
 10BASE-T 100BASE-TX 100BASE-T4
 1000BASE-T 2.5GBASE-T 5GBASE-T
 10GBASE-T 25GBASE-T 40GBASE-T
 ATM-25 ATM-51 ATM-155
 100VG-AnyLan TR-4 TR-16 Active
 TR-16 Passive



Cable ID: CAT8_FLAT_0.5M_1

Date / Time: 02/27/2020 02:17:53 PM

Headroom 14.6 dB (NEXT 36-45)

Test Limit: TIA Cat 8 Channel

Cable Type: Cat 8 S/FTP

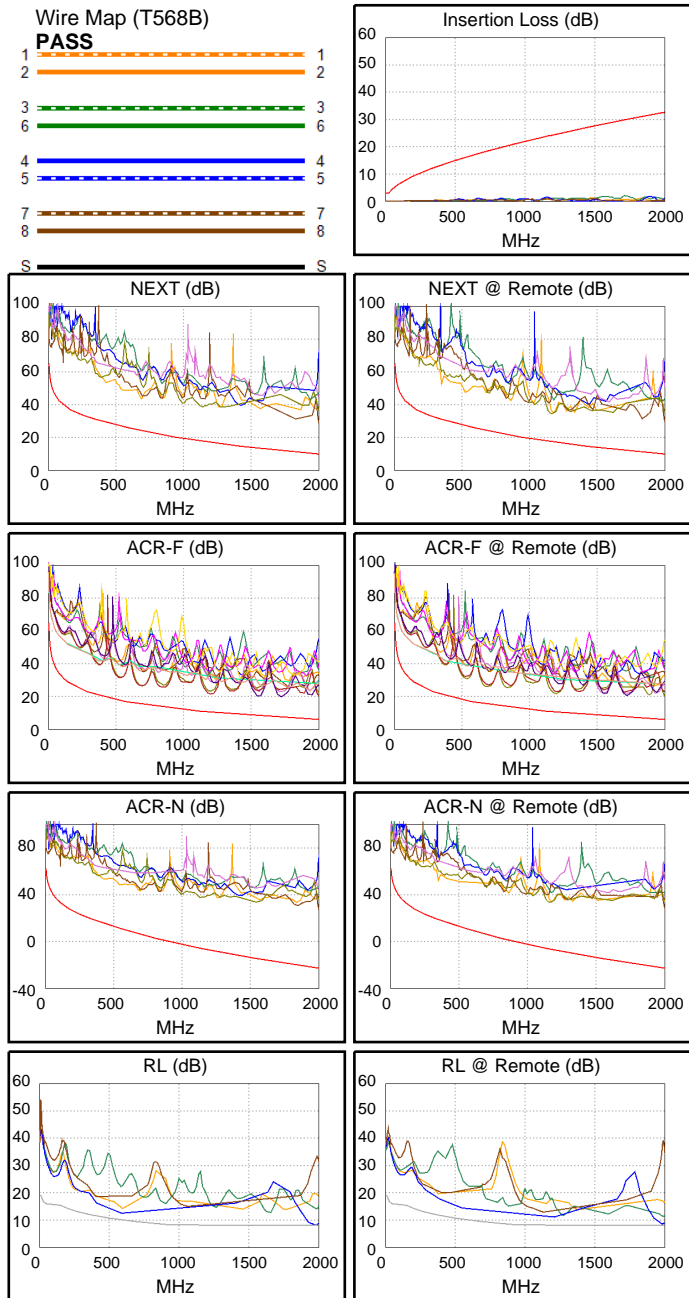
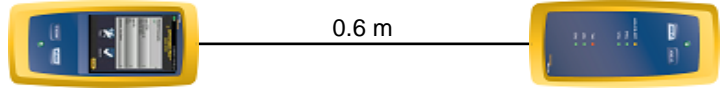
NVP: 72.0%

Operator: KINGDATA
Software Version: V6.1 Build 3
Limits Version: V7.1
Calibration Start Date:
Main (Module): 05/11/2018
Remote (Module): 05/11/2018

Test Summary: PASS

Model: DSX-8000
Main S/N: 1747425
Remote S/N: 1747424
Main Adapter: DSX-CHA804
Remote Adapter: DSX-CHA804

Length (m), Limit 30.0	[Pair 12]	0.6
Prop. Delay (ns), Limit 179	[Pair 12]	3
Delay Skew (ns), Limit 17	[Pair 12]	0
Resistance (ohms), Limit 6.40	[Pair 12]	0.31
Insertion Loss Margin (dB)	[Pair 36]	27.7
Frequency (MHz)	[Pair 36]	1722.0
Limit (dB)	[Pair 36]	30.0



Worst Case Margin Worst Case Value

PASS	MAIN	SR	MAIN	SR
Worst Pair	36-45	36-45	36-45	36-45
NEXT (dB)	14.6	15.3	18.6	19.8
Freq. (MHz)	4.6	3.5	2000.	2000.
Limit (dB)	62.8	64.7	9.8	9.8
Worst Pair	36	36	36	36
PS NEXT (dB)	17.1	17.3	20.1	20.4
Freq. (MHz)	3.4	1170.	2000.	2000.
Limit (dB)	61.7	14.5	7.3	7.3

PASS	MAIN	SR	MAIN	SR
Worst Pair	45-36	36-45	78-36	36-45
ACR-F (dB)	11.0	10.5	12.5	14.1
Freq. (MHz)	1204.	677.0	1722.	2000.
Limit (dB)	10.4	15.4	7.2	5.9
Worst Pair	36	45	36	36
PS ACR-F (dB)	13.1	13.2	13.1	13.7
Freq. (MHz)	1556.	677.0	1556.	1718.
Limit (dB)	5.1	12.4	5.1	4.3

N/A	MAIN	SR	MAIN	SR
Worst Pair	36-45	36-45	36-45	36-45
ACR-N (dB)	17.6	18.3	50.0	51.2
Freq. (MHz)	4.6	3.5	2000.	2000.
Limit (dB)	59.8	61.7	-22.9	-22.9
Worst Pair	36	36	36	36
PS ACR-N (dB)	20.1	20.4	51.8	52.1
Freq. (MHz)	3.4	3.3	2000.	2000.
Limit (dB)	58.7	59.0	-25.3	-25.3

N/A	MAIN	SR	MAIN	SR
Worst Pair	45	45	45	45
RL (dB)	-0.7	-0.2	-0.7	-0.2
Freq. (MHz)	1960.	1954.	1960.	1954.
Limit (dB)	8.0	8.0	8.0	8.0

Compliant Network Standards:
 10BASE-T 100BASE-TX 100BASE-T4
 1000BASE-T 2.5GBASE-T 5GBASE-T
 10GBASE-T 25GBASE-T 40GBASE-T
 ATM-25 ATM-51 ATM-155
 100VG-AnyLan TR-4 TR-16 Active
 TR-16 Passive